

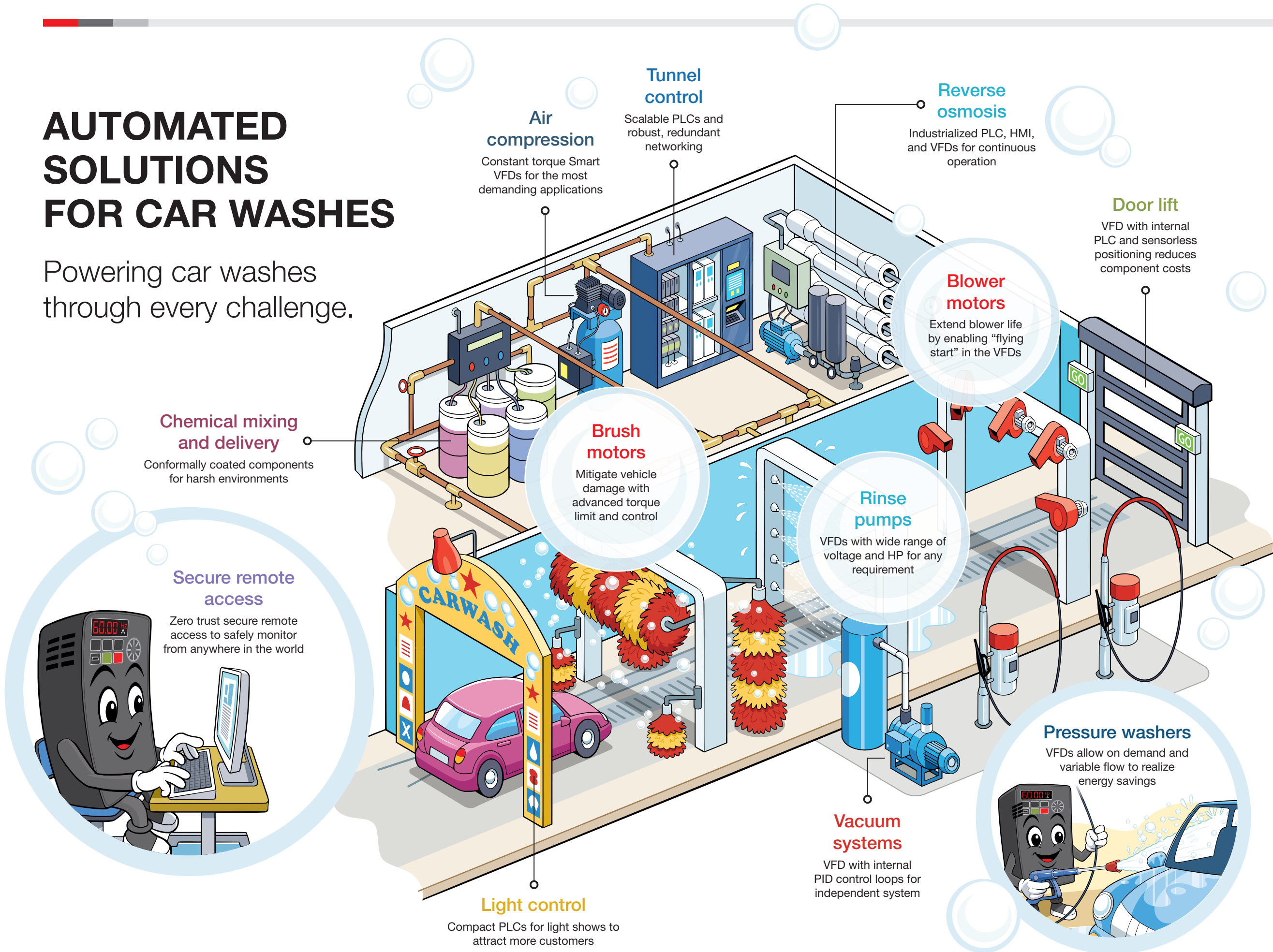
# SMARTER DRIVES. SMARTER CAR WASHES.

Control Every Drop. Power Every Wash.



# AUTOMATED SOLUTIONS FOR CAR WASHES

Powering car washes through every challenge.



### Chemical mixing and delivery

Conformally coated components for harsh environments

### Secure remote access

Zero trust secure remote access to safely monitor from anywhere in the world

### Air compression

Constant torque Smart VFDs for the most demanding applications

### Tunnel control

Scalable PLCs and robust, redundant networking

### Reverse osmosis

Industrialized PLC, HMI, and VFDs for continuous operation

### Blower motors

Extend blower life by enabling "flying start" in the VFDs

### Door lift

VFD with internal PLC and sensorless positioning reduces component costs

### Brush motors

Mitigate vehicle damage with advanced torque limit and control

### Rinse pumps

VFDs with wide range of voltage and HP for any requirement

### Pressure washers

VFDs allow on demand and variable flow to realize energy savings

### Vacuum systems

VFD with internal PID control loops for independent system

### Light control

Compact PLCs for light shows to attract more customers

#### HIGH-PERFORMANCE CONTROL



iQ-R Modular PLC

#### COMPACT AND POWERFUL CONTROL



iQ-F Compact PLCs

#### SMART VFDs



FR-E800 Series VFDs FR-F800 Series VFDs

#### USER-FRIENDLY HMIs



GOT2000 HMI

#### ADVANCED VISUALIZATION



GENESIS

#### ZERO TRUST REMOTE ACCESS



**By partnering with Mitsubishi Electric Automation, you will experience:**

- **Strong support network** including local field engineers and 1-800 phone line
- **Value-added services** such as start-up, onsite repair, and extended warranties (VFD 5-year warranty)
- **Complete solutions under one roof:** VFD, PLC/HMI, and SCADA
- **Large inventory** with 95% of common items stocked locally
- Extensive **distributor network**

Smarter car washes start with Mitsubishi Electric Automation.



[Contact us to get started](#) ➔

**Americas Offices**

<p>US Mitsubishi Electric Automation, Inc. 500 Corporate Woods Parkway Vernon Hills, Illinois 60061 847-478-2100</p>	<p>Canada Mitsubishi Electric Automation, Inc. 4299 14th Avenue Markham, Ontario L3R 0J2 905-754-3805</p>	<p>Mexico Blvd. Miguel de Cervantes Saavedra 301 Col. Ampliación Granada, Miguel Hidalgo CDMX, 11520, México</p>
--	---	--



Mitsubishi Electric's e-F@ctory concept utilizes both FA and IT technologies, through collaboration with e-F@ctory Alliance Partners, to reduce the total cost of development, production, and maintenance, with the aim of achieving manufacturing that is a "step ahead of the times".