



for a greener tomorrow

# COST EFFECTIVE, MID-SIZED GT23 SERIES

## Product Overview



The GT23 Series is a basic, cost-effective graphical operator terminal which includes displays in 8.4" and 10.4" with VGA resolution. This series has many advanced interactive features making it a perfect fit for mid-size to small applications where a larger screen size is required, and cost is a concern.

### KEY BENEFITS:

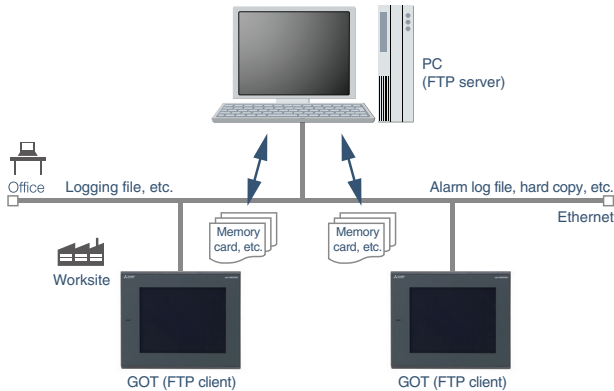
- **Flexible Configuration** – A wide range of communication drivers and connection types to connect to various industrial devices
- **Maintenance Platform** – On-demand portal for accessing detailed system information including system launcher, diagnostic function, device monitoring, programs backup and restore function and servo maintenance
- **Smart Analysis** – Analyze system performance using data the GOT collects from controllers and other devices and displays in graph or list configuration
- **Interactive Display** – Seamless integration with Mitsubishi Electric automation devices allows for easy system monitoring and parameter adjustments
- **2 USB Ports (Device and Host)** – Convenient to transfer projects, access data logging, and connect mouse, keyboard or barcode reader



# Cost Effective, Mid-Sized GT23 Series – Product Overview

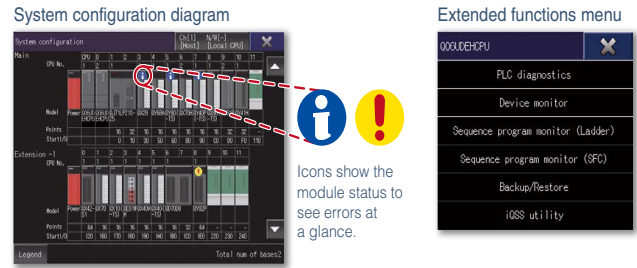
## FILE TRANSFER FUNCTION

Production results can be stored on the GOT's SD memory card or USB memory and sent to a personal computer. The GOT can also receive production instructions from a PC (FTP server).



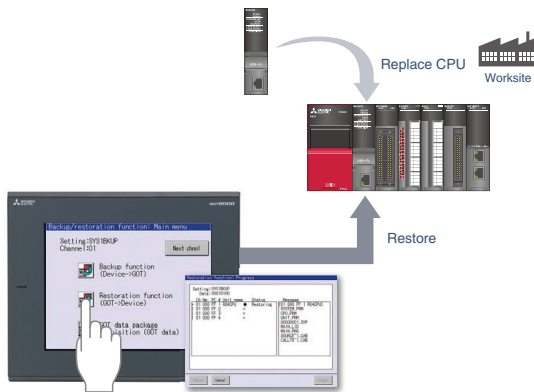
## GOT2000 SYSTEM LAUNCHER

Check the status of a PLC without having to open the electrical enclosure to connect a PC. A graphical configuration diagram on the terminal indicates module statuses. Touch a module on the diagram to see the extended function list and carry out maintenance work effectively.



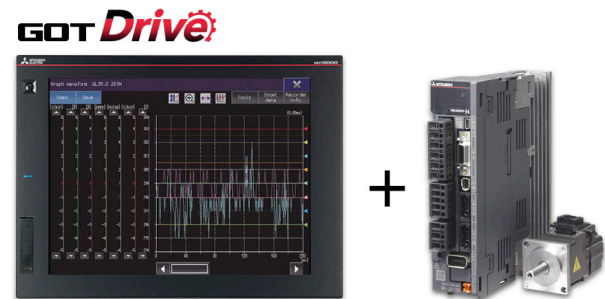
## GT23 BACKUP & RESTORATION

Back-up or restore programs and parameters from controllers or other devices on the GOT's SD memory card or USB drive. Set an automatic back-up for multiple controllers to have programs regularly saved efficiently.



## GOT DRIVE

GT23 terminals have advanced drive control connectivity functions for MR-J4 and MR-JE series servo amplifiers. This functionality helps to minimize start-up time, adjustment and maintenance work on servo amplifiers by eliminating the need for a PC.



## MITSUBISHI ELECTRIC AUTOMATION, INC.

500 Corporate Woods Parkway, Vernon Hills, IL 60061  
Ph 847.478.2100 • Fx 847.478.2253

[us.MitsubishiElectric.com/fa/en](http://us.MitsubishiElectric.com/fa/en)

March, 2017 • ©2017, Mitsubishi Electric Automation, Inc. • Specifications subject to change without notice. • All rights reserved