

FACTORY AUTOMATION

Graphic Operation Terminal



## GOT2000 Series Wide Model



# GOT2000 *Wide*

Graphic Operation Terminal

# GLOBAL IMPACT OF MITSUBISHI ELECTRIC



Through Mitsubishi Electric's vision, "Changes for the Better" are possible for a brighter future.

## ***Changes for the Better***

"Changes for the Better" represents the Mitsubishi Electric Group's attitude to "always strive to achieve something better", as we continue to change and grow. Each one of us shares a strong will and passion to continuously aim for change, reinforcing our commitment to creating "an even better tomorrow".

Mitsubishi Electric is involved in many areas including the following:

### **Energy and Electric Systems**

A wide range of power and electrical products from generators to large-scale displays.

### **Electronic Devices**

A wide portfolio of cutting-edge semiconductor devices for systems and products.

### **Home Appliance**

Dependable consumer products like air conditioners and home entertainment systems.

### **Information and Communication Systems**

Commercial and consumer-centric equipment, products and systems.

### **Industrial Automation Systems**

Maximizing productivity and efficiency with cutting-edge automation technology.

Our advances in AI and IoT are adding new value to society in diverse areas from automation to information systems. The creation of game-changing solutions is helping to transform the world, which is why we are honored to be recognized in the 2019 'Forbes Digital 100' as one of world's most influential digital corporations.



Established February 2nd 1921 Mitsubishi Electric celebrates 100 years of serving society through practical, innovative technology solving the issues of the day.



Index

1. Overview	04
2. Hardware	06
GT25 Wide Model	06
GT21 Wide Model	08
3. Features	10
4. Specifications	19
5. Product List	23
6. Support	25

- 1
- 2
- 3
- 4
- 5
- 6

Lineup

GT25  
Wide

GOT2000 widescreen expands your view

Ethernet (2 ports) RS-232 RS-422/485 CC-Link IE Field Basic Sound output (built-in)

NEW

12.1 inch

TFT  
65536  
colors

DC



WXGA  
1280 x 800

GT2512-WXTBD  
GT2512-WXTSD

10.1 inch

TFT  
65536  
colors

DC



WXGA  
1280 x 800

GT2510-WXTBD  
GT2510-WXTSD

7 inch

TFT  
65536  
colors

DC



WVGA  
800 x 480

GT2507-WTBD  
GT2507-WTSD

GT21 Expands possibilities of GT21 models  
Wide

Ethernet RS-232 RS-422/485 CC-Link IE Field Basic

7 inch

TFT  
65536  
colors

DC



WVGA  
800 x 480

GT2107-WTBD  
GT2107-WTSD

GT Works3  
HMI/GOT Screen Design Software

Professional designs in just a few clicks

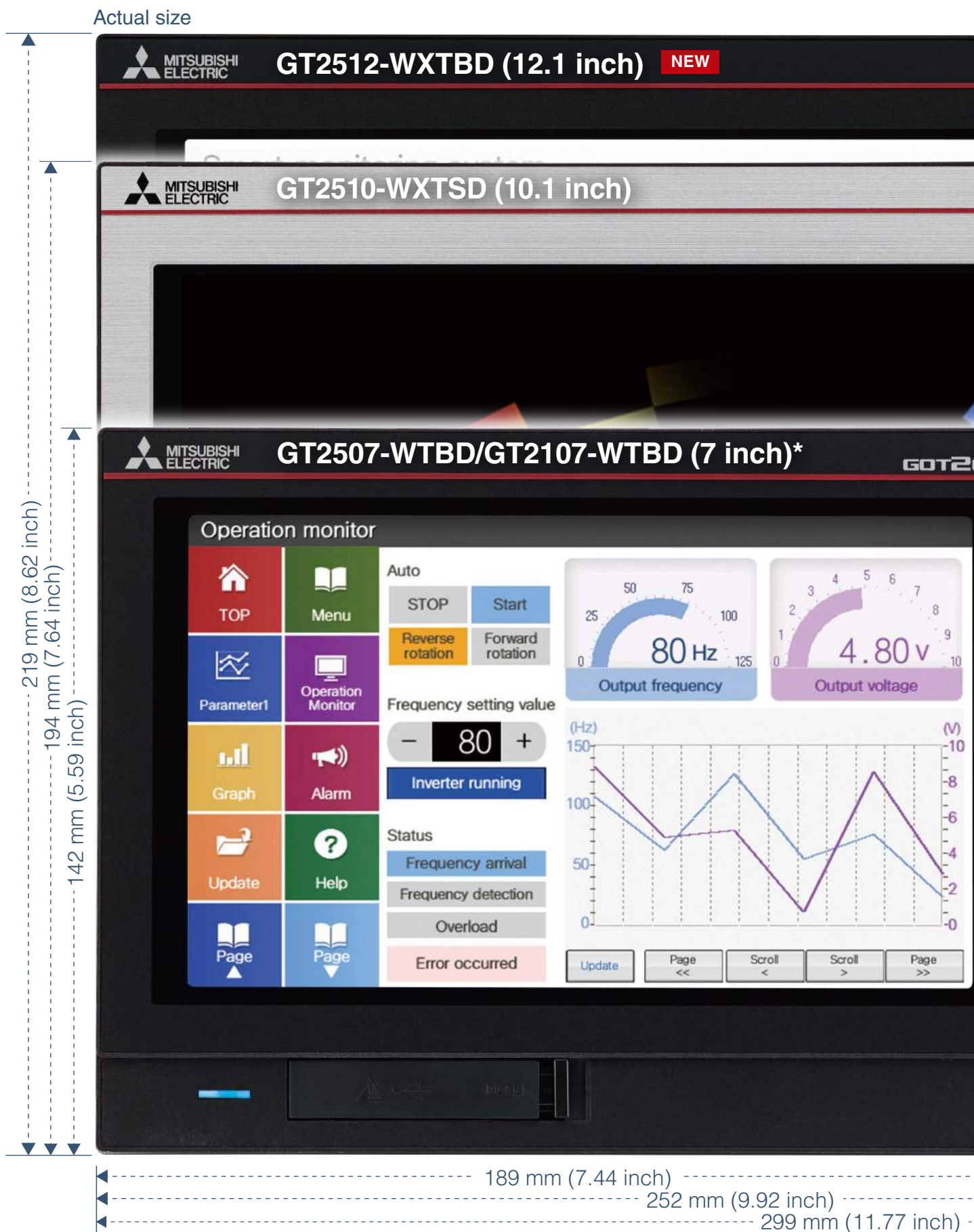
You can design GOT widescreens with GT Works3, familiar software that can be commonly used for the GOT2000 Series.

GOT Screen Design Software  
MELSOFT GT Works3

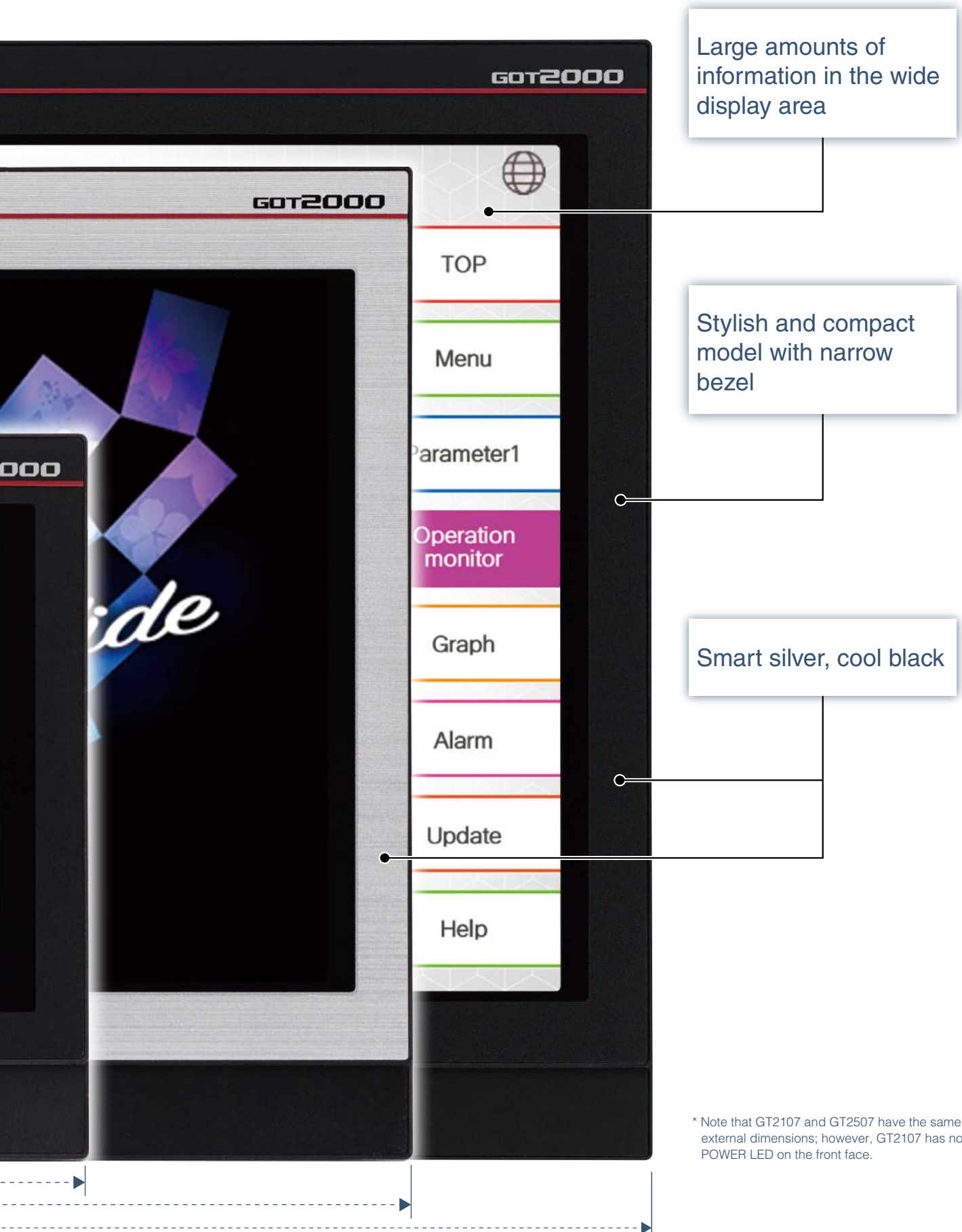




# Widen Your View



The widescreen elegant body style presents a large amount of information with a high picture quality



# GT25 wide model

GOT2000 widescreen expands your view

For details

Concept movie



NEW GOT



## Various interfaces are equipped in a compact body

The stylish design realized with a narrow bezel. The GOT2000 wide models are available in a choice of silver and black.

Two Ethernet ports and the built-in sound output interface\* equipped as standard add value to your system.

\* A speaker with built-in amplifier is required separately.

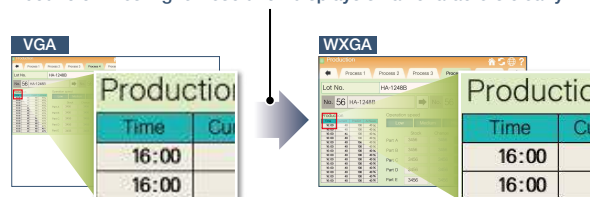
Item	Specifications
Display	7" widescreen/10.1" widescreen/12.1" widescreen <b>NEW</b> TFT color LCD, 65536 colors
Resolution	7": WVGA, 10.1": WXGA, 12.1": WXGA
Backlight	White LED
User memory	Memory for storage (ROM): 32 MB Memory for operation (RAM): 128 MB
Standard interface	Ethernet (2 ports), RS-232, RS-422/485 USB host (USB-A): 1 channel (USB 2.0 (High-Speed 480 Mbps)) USB device (USB Mini-B): 1 channel (USB 2.0 (High-Speed 480 Mbps)) Sound output interface (φ3.5 minijack), SD memory card interface
Extension interface	—
Wireless LAN communication unit interface	For installing a wireless LAN communication unit

## Ultra high resolution display improves expressiveness

Ultra high resolution WXGA screen\* displays necessary and sufficient information on one screen. Small characters can be displayed clearly.

\* WXGA display on the 10.1 inch and 12.1 inch models. WVGA display on the 7 inch model.

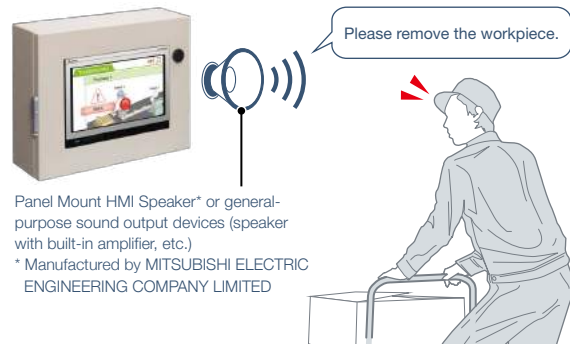
About 3.3 times higher resolution displays small characters clearly



\* The example image shows the 10.1 inch model.

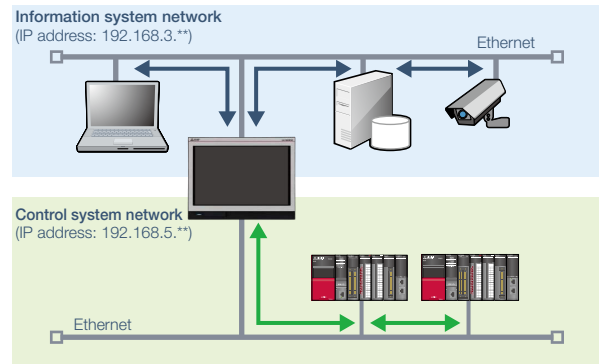
## Add value to your system with sound notification

The built-in sound output interface makes it easy to implement the sound notification system (page 12, page 13). Not only by displaying the contents of events on the screen but also by notifying with sound, you can convey the necessary information to the operators.



## Enable separation of information and control system networks

Two Ethernet ports physically separate the information system network in the office from the control system network at the production site. The network architecture becomes safer and more secure by setting different IP addresses for each network.



## GT25 wide model external appearance [front face/rear face] \* The example picture shows the 10.1 inch model.



### 1 USB interface: device (USB Mini-B)

Connect to a personal computer and transfer data.

### 2 USB interface: host (USB-A)

Transfer project data or read the data (logging data, etc.) to or from the GOT using the USB memory. A USB mouse, keyboard, barcode reader\*, or RFID reader\* can also be connected.

\* USB keyboard (HID) compatible model only

### 3 Ethernet interface (2 ports)

Use Ethernet to simultaneously connect up to four types of industrial devices from different manufacturers. CC-Link IE Field Network Basic compatible devices can also be connected.

### 4 RS-422/485 interface

Connect to various industrial devices and barcode readers.

### 5 RS-232 interface

Connect to various industrial devices, barcode readers and serial printers.

### 6 Sound output interface (φ3.5 minijack)

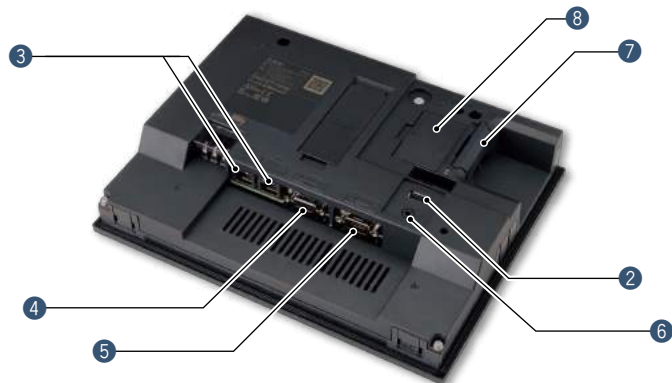
Output sound by connecting φ3.5 stereo mini-plug (3-prong).

### 7 SD memory card interface

Save large volumes of data, including alarms and logging data.

### 8 Wireless LAN communication unit interface

Install a wireless LAN communication unit.



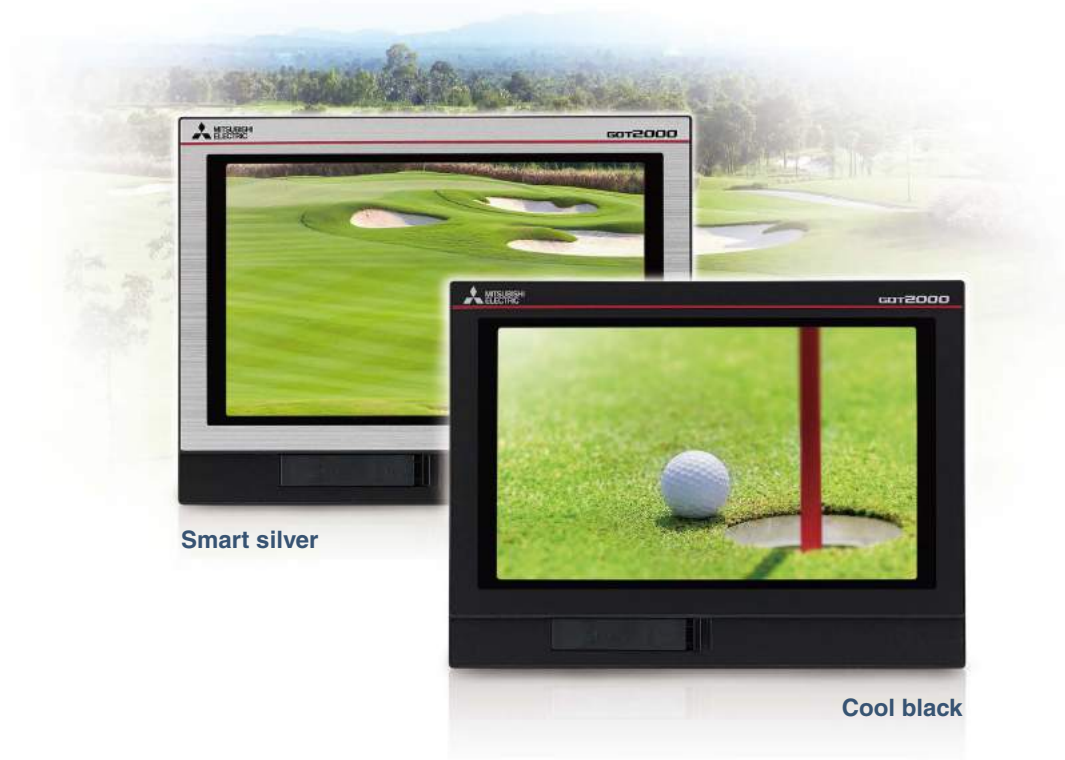


# GT21 wide model

Expands possibilities of GT21 models

For details

Concept movie



Smart silver

Cool black

## The highest resolution screen in the GT21 models, with various built-in interfaces

The GOT2000 wide models are available in a choice of silver and black. In addition to the high resolution display, 65536 colors of LCD improves quality of screen display.

The first GT21 model with the USB host enables you to connect a USB mouse and keyboard, or transfer data using a USB memory. In addition, Ethernet printers can be used.

Item	Specifications
Display	7" widescreen, TFT color LCD, 65536 colors
Resolution	WVGA
Backlight	White LED
User memory	Memory for storage (ROM): 15 MB
Standard interface	Ethernet, RS-232, RS-422/485 USB host (USB-A): 1 channel (USB 1.1 (Full-Speed 12 Mbps)) USB device (USB Mini-B): 1 channel (USB 1.1 (Full-Speed 12 Mbps)) SD memory card interface

## Widescreen displays large amounts of information

High resolution WVGA screen has sufficient display area for long alarm messages.

5 times higher resolution greatly increases expressiveness

Standard GT1055-Q

QVGA 320 × 240 dots



Wide GT2107-W

WVGA 800 × 480 dots





## Remote monitoring provides wide access to application

Remote monitoring with the VNC server function is now available on GT21. By remotely connecting to GOT from personal computer or tablet, you can operate, monitor production equipment and connect to system devices.

\* GT2107-W only among GT21 models.



## Enhanced graphics

Outline fonts can now be used on GT21 model. Antialiasing smoothes out jagged text edges and displays clear characters, offering improved visibility of screen display.

\* GT2107-W only among GT21 models.

**Standard** 16dot HQ Gothic

Trend graph

**Wide** Outline Gothic (antialiasing enabled)

Trend graph

Clear characters improve visibility

## ■ GT21 wide model external appearance [front face/rear face]



### ① USB interface: device (USB Mini-B)

Connect to a personal computer and transfer data.

### ② USB interface: host (USB-A)

Transfer project data or read the data (logging data, etc.) to or from the GOT using the USB memory. A USB mouse, keyboard, barcode reader\*, or RFID reader\* can also be connected.

\* USB keyboard (HID) compatible model only

### ③ Ethernet interface

Use Ethernet to simultaneously connect up to two types of industrial devices from different manufacturers. CC-Link IE Field Network Basic compatible devices can also be connected.

### ④ RS-422/485 interface

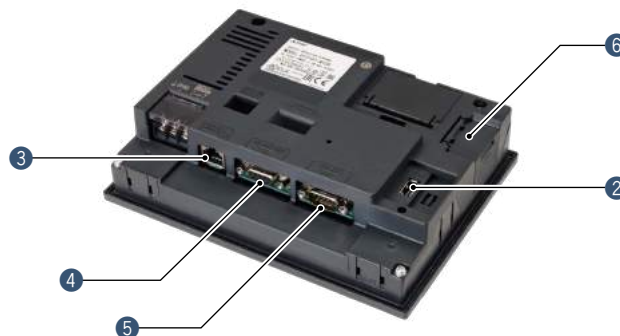
Connect to various industrial devices and barcode readers.

### ⑤ RS-232 interface

Connect to various industrial devices, barcode readers and serial printers.

### ⑥ SD memory card interface

Save large volumes of data, including alarms and logging data.



# Improve visibility and operation of your application with GOT wide model

The GOT wide model has various advantages and benefits

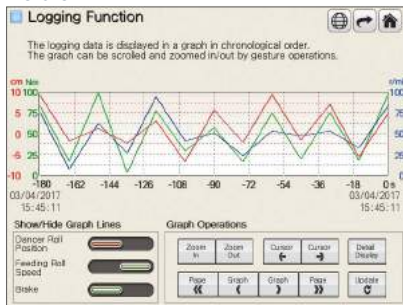
The greater amount visual information, the higher productivity

✓ GT25 Wide ✓ GT21 Wide



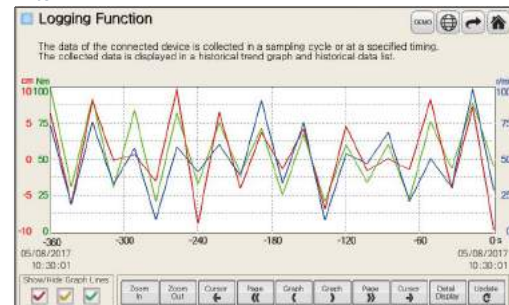
## Increase the graph display area

Before



On wide model

After



The wider graph display area enables you to check a large amount of logged trend data.

## Increase alarm information

Before

Occurred	Message	Reset
3/ 4/2017 15:46:44	Parameter error	15:46
3/ 4/2017 15:46:44	Fuel error	15:46
3/ 4/2017 15:46:44	Internal pressure error	15:46
3/ 4/2017 15:46:44	Timing belt fault	15:46
3/ 4/2017 15:46:44	Apparatus life	15:46
3/ 4/2017 15:46:44	Oil pressure error	15:46
3/ 4/2017 15:46:44	Battery error	15:46
3/ 4/2017 15:46:44	Fuse error	15:46
3/ 4/2017 15:46:44	Parameter error	15:46

On wide model

After

Occurred	Message	Reset
03/04/2017 15:46:59	Parameter error	15:46
03/04/2017 15:46:59	Fuel error	15:46
03/04/2017 15:46:59	Internal pressure error	15:46
03/04/2017 15:46:59	Timing belt fault	15:46
03/04/2017 15:46:59	Apparatus life	15:46
03/04/2017 15:46:59	Oil pressure error	15:46
03/04/2017 15:46:59	Battery error	15:46
03/04/2017 15:46:59	Fuse error	15:46
03/04/2017 15:46:59	Parameter error	15:46

Move the operation menu to the side of the widescreen and you can check more alarms.

## Always show numeric keypad

Before

Time	Current	Predicted	Achieved	Operation speed
15:48	3456	3456	3456	Low
15:48	3456	3456	3456	Medium
15:48	3456	3456	3456	High

On wide model

After

Time	Current	Predicted	Achieved	Operation speed
15:48	3456	3456	3456	Low
15:48	3456	3456	3456	Medium
15:48	3456	3456	3456	High

Put the numerical keypad on the base screen and operate the screen while viewing necessary information.

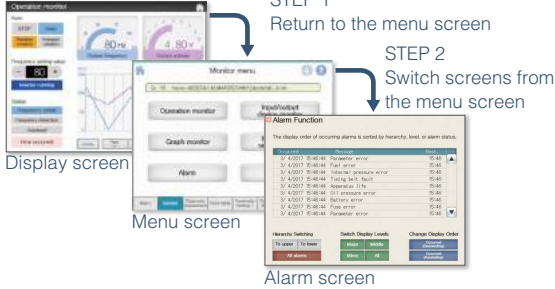


## Improve operability by always displaying the menu

✓ GT25 Wide ✓ GT21 Wide

## Quickly change screens from every display screen

Before



Do I always have to return to the menu screen?

On wide model

After



Arrange the menu on the side of the widescreen and switch screens with just one touch operation.

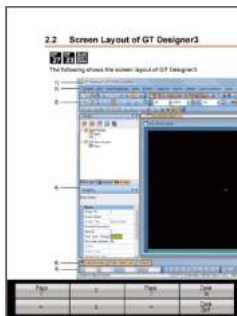
## Display the whole page vertically using the document display function

✓ GT25 Wide □ GT21 Wide

## View the whole page on one screen

Before

VGA



The necessary information is not displayed on one page. It is troublesome to scroll the page...

On wide model

After

WXGA



Display the whole document page and check the information quickly.

## Install GOT in confined spaces

✓ GT25 Wide ✓ GT21 Wide

## Downsize the operation panel

Slim type



Narrow bezel

On wide model

Compact body with wide display area!



The compact body can be installed vertically and enables downsizing of the machine.



# Convey information easily and reliably with sound

GT Works3 can now be used to synthesize speech data.  
Sound files can be created easily.



## Support sound file creation

☒ GT25 Wide ☐ GT21 Wide

### Speech synthesis function\*1

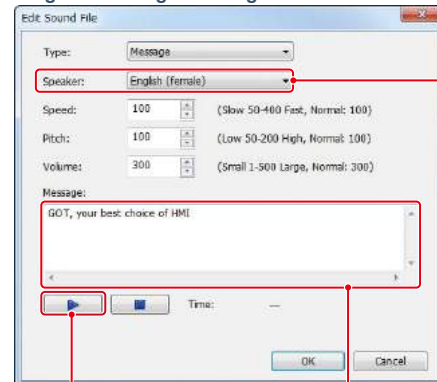
Just enter text in GT Works3 to create a sound file of a message. (Up to 500 files can be registered.) Messages can be created in 6 languages and you can select the speaker (female/male) for each language. In addition, using FA Term Translation Tool\*2 together can reduce time for multi-language screen creation and support globalization of the system.

\*1 GT Works Text to Speech License (SW1DND-GTVO-M) is required separately.  
\*2 This tool is included with GT Works3. For the details, please refer to page 18 or contact your local sales office.

#### Supported language



#### Image of creating a message



Select language and gender of speaker

Playback and check the sound

Enter an arbitrary message

## Enhanced playback functions of sound files

☒ GT25 Wide ☐ GT21 Wide

Multiple files can be set and played back consecutively (up to 16 files). The playback time is now longer than before so that various messages can be used.

#### Sound file specifications

Item	Specifications
Sound file format	WAV format
Sampling frequency	8.000 kHz/16.000 kHz
Channel number	1 channel (monoral)
Maximum playback time	30 seconds per file 480 seconds for consecutive playback (up to 16 files)
Consecutive playback (by switch or trigger action)	Up to 16 files can be set
Playback specifications	Mute/cancel is supported

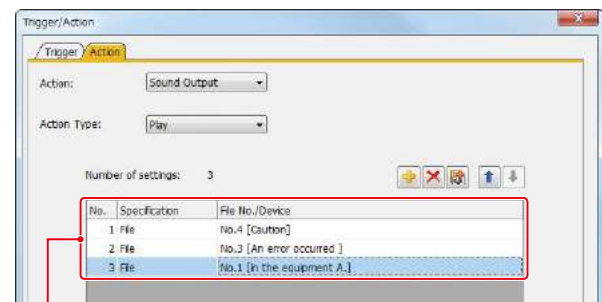
#### Cancel or mute the sound while it is being played back

After checking the situation, you can stop or mute the sound while it is being played back so that you do not need to worry about annoying other operators.



#### Easily set consecutive playback list (by switch operation or trigger action)

In GT Works3, just specify the files in the playlist in the order of your preference and the files are played back consecutively.



By setting actions, the sound files are played back in the order specified in the list. Up to 16 sound files can be specified.



#### Specification details and restrictions

For the supported connection types and necessary option devices, please refer to the relevant product manual.

## Sound notification is useful at the worksite

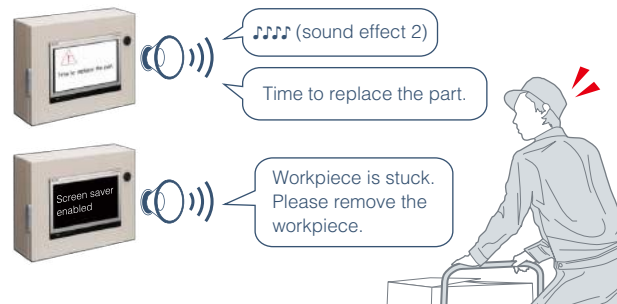
☒ GT25 Wide ☐ GT21 Wide

### Use message, sound effect, or melody to notify occurring events

When an alarm occurs, outputting a warning message or a warning sound can reliably convey the information to the operators who are working away from the GOT. It is also usable while screen saver is active. Quickly notify the alarm information and the error cause of the equipment to reduce the downtime of the system.

#### Playable sound file types

Message	Sound effect	Melody
Create from arbitrary text	More than 50 files are included	More than 10 files are included



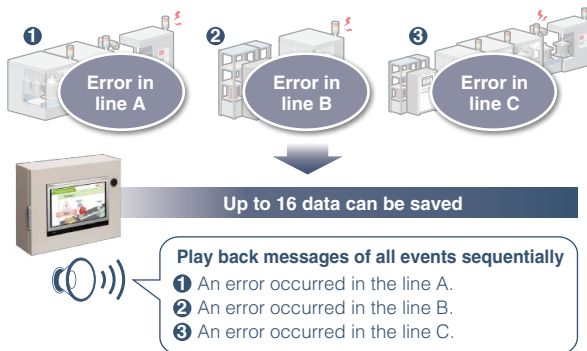
## Additional functions

☒ GT25 Wide ☐ GT21 Wide

### Even if multiple errors occur, playback all messages

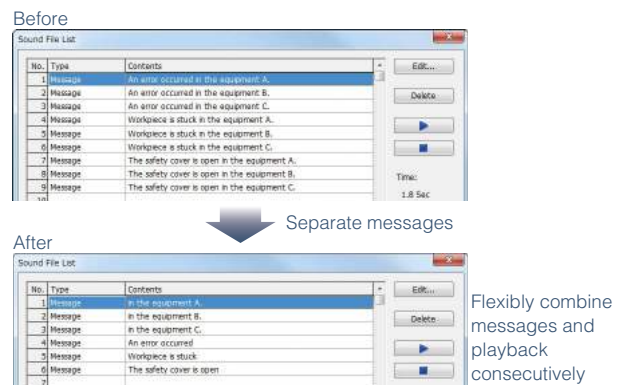
If multiple errors occurred simultaneously, GOT saves up to 16 data and notify all events. There is no need to worry about missing some occurred events.

#### Even if multiple errors occur simultaneously...



### Consecutive playback reduces data size

You can extract common parts and register them as separate sound data to avoid saving duplicate data and reduce data size. To change messages, simply change the combination.



## Useful tips about using sound notification

☒ GT25 Wide ☐ GT21 Wide

### Change touch sound depending on the situation

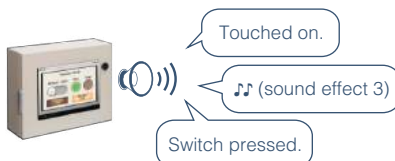
The touch sound can be changed depending on the worksite situation or the operator's preference.

#### Touch sound for various situations



#### Touch sound for each operator

Preferred touch sound can be set.



### Use as the sound guidance when touching a switch

When touching a switch, a message guides you to the next operation and notifies cautions so that you can avoid operation mistakes in advance.



### Announce a message in various languages sequentially

When there are operators who understand different languages, you can convey necessary information correctly to every operator.



#### Specification details and restrictions

For the supported connection types and necessary option devices, please refer to the relevant product manual.

## GOT Web-based Remote Solutions

**The GOT2000 improves visualization accessibility and reduces total cost of ownership**

For the details, please refer to the following catalogs.  
 • GOT Web-based Remote Solutions Leaflet (L(NA)08399ENG)  
 • GOT2000 Series GOT Mobile Function Application Examples (L(NA)08464ENG)



### Monitor your worksite from a remote location

☒ GT25 Wide ☐ GT21 Wide

#### GOT Mobile function

Via GOT at the worksite, monitor the connected devices from computers and tablets in a remote location. By creating screens of different sizes depending on the device to use, you can display only necessary information in an easy-to-view layout.

- \* A separate license (GT25-WEBSKEY-□) is required.
- \* Up to five clients can connect to one GOT at the same time.
- \* Web browser (Google Chrome or Safari) is required on the client.

Monitor at the production site, from inside or outside the office simultaneously



Flexibly design screens depending on the device



### Adjust and start up production by up to five operators simultaneously without worrying about simultaneous operations

Up to five information devices (clients) can simultaneously access a single GOT. Exclusive control of authorization prevents conflicts between the on-site GOT and remote access device. (GOT network interaction)



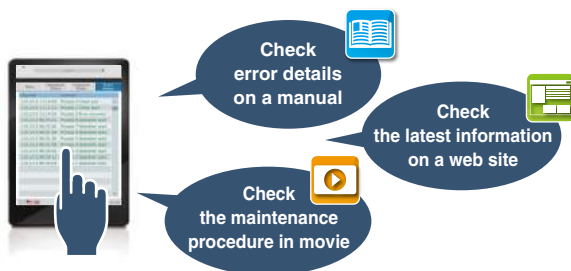
\*1 For the countries where the unit can be used and other details, please refer to the "Product list" (page 23).

### Application examples

☒ GT25 Wide ☐ GT21 Wide

#### Quickly check the necessary information and reduce downtime

Prepare necessary manuals, web sites, and movie manuals in advance and you can check the information you need on tablets. (Hyperlink function)

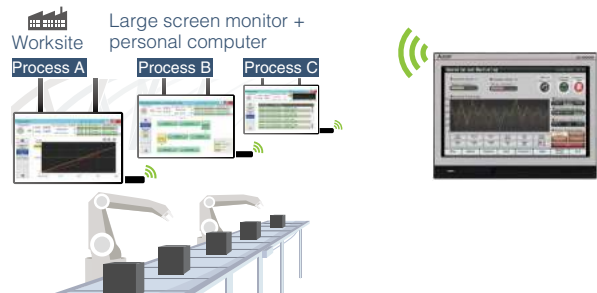


#### Specification details and restrictions

For the supported connection types and necessary option devices, please refer to the Graphic Operation Terminal GOT2000 Series/ GOT SIMPLE Series Catalog (L(NA)08270ENG) or the relevant product manual.

#### Implement the ANDON system easily

Use GOT with a large monitor and a personal computer and you can implement the ANDON system. Each monitor can display a different initial screen just by turning on the power of the system. (ANDON function)





## GOT Drive Control Interactive Solutions

Support startup, adjustment of servo systems with advanced functionality and improved connectivity

For the details, please refer to the following catalog.  
• GOT2000 Drive Control (Servo) Interactive Solutions catalog (L(NA)08335ENG)

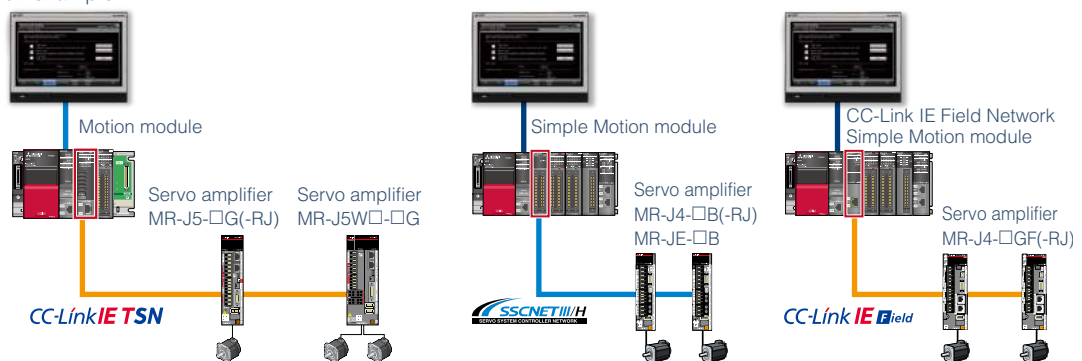


Support startup, adjustment, and maintenance of servo systems ☒ GT25 Wide ☒ GT21 Wide

### Drive control interactive functions

The GOT2000 provides major functions of MR Configurator2 (supporting MR-J5, MR-J4, and MR-JE). The GOT Drive enhanced functionality is designed to eliminate need for additional hardware, software and suits customers' applications to speed up system startup, improve maintenance and troubleshooting.

System configuration example



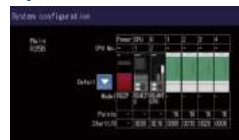
### Check the status of servo amplifier

The system launcher function supports SSCNET III/H. A graphical configuration diagram indicates the status of servo amplifier so that you can quickly identify the error cause and solve the problem. The drive recorder function can be started from the configuration diagram screen.

\* Not supported by GT21.

\* The system launcher for MR-J5 will be supported soon.

### System launcher function



Display the serial number of servo amplifier and motor. File output is also supported.

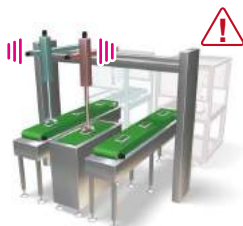


Select a servo amplifier and analyze the waveform in the drive recorder function.

## Support preventive maintenance of a servo system ☒ GT25 Wide ☒ GT21 Wide

### Machine diagnosis function

GOT displays the screen equivalent to the machine diagnosis of MR Configurator2 maintenance function. In addition, GOT can be used to log estimation values of servo amplifier and set threshold values so that you can compare these values to predict machine deterioration and make preventive maintenance easy.



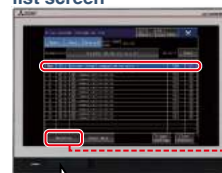
Perform preventive maintenance before the machine stops

## Identify error cause of a system problem ☒ GT25 Wide ☐ GT21 Wide

### Drive recorder function

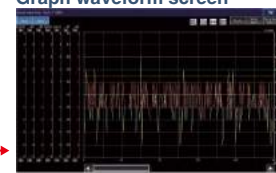
GOT displays the screen equivalent to the drive recorder of MR Configurator2. The data before and after the alarm occurrence can be read from the servo amplifier and displayed in a waveform or a list form so that you can quickly solve the problem.

#### Drive recorder information list screen



Store the servo data on the GOT's SD memory card or USB memory, and check and analyze in your office.

#### Graph waveform screen



### Specification details and restrictions

For the supported connection types and necessary option devices, please refer to the Graphic Operation Terminal GOT2000 Series/ GOT SIMPLE Series Catalog (L(NA)08270ENG) or the relevant product manual.

# Easily connect to various industrial devices

Simply connect to various controllers using built-in interfaces of GOT



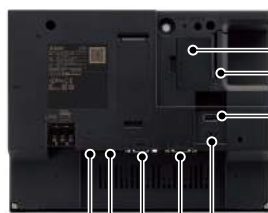
## Built-in interfaces of GOT to connect to various industrial devices

### GT25 wide model

\* The example picture shows the 10.1 inch model.



#### 1) USB interface: device (USB Mini-B)



#### 2) Wireless LAN communication unit interface



Wireless LAN communication unit\*1 (access point)



\*1 For the countries where the unit can be used, please refer to the product list on page 23.

#### 3) SD memory card interface



SD memory card

#### 4) USB interface: host (USB-A)\*2

\*2 Use the panel-mounted USB port extension cable to route the USB port to the front side of the control panel.



USB (host) compatible devices

#### 5) Sound output interface (φ3.5 minijack)



Panel Mount HMI Speaker\*4 or general-purpose sound output devices (speaker with built-in amplifier, etc.)

\*4 Manufactured by MITSUBISHI ELECTRIC ENGINEERING COMPANY LIMITED

#### 6) RS-232 interface



Personal computer, industrial devices, serial printer, etc.

#### 7) RS-422/485 interface



Industrial devices, etc.

#### 8) Ethernet interface\*3 Port 1

#### Ethernet



Personal computer, industrial devices, etc.

#### 9) Ethernet interface\*3 Port 2

#### CC-Link IE Field Basic



CC-Link IE Field Network Basic compatible devices

\*3 Both Ethernet interfaces (Port 1 and Port 2) can be used to connect to Ethernet compatible devices and CC-Link IE Field Network Basic compatible devices.

### GT21 wide model



1)



3)

4)

8)

7)

6)

### Specification details and restrictions

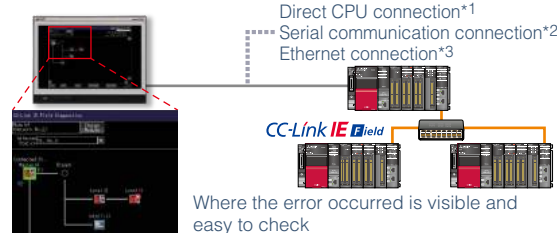
For the supported connection types and necessary option devices, please refer to the Graphic Operation Terminal GOT2000 Series/ GOT SIMPLE Series Catalog (L(NA)08270ENG) or the relevant product manual.



## Support quick troubleshooting

### CC-Link IE Field Network diagnostics

GOT can be used to check the CC-Link IE Field Network diagnostics screen. The function enables you to identify the error in the network at a glance without using a personal computer. If a problem occurs, you can quickly check where the error occurs, the error cause, and the event history and reduce downtime.



- \*1 RCPU and FX5CPU do not support direct CPU connection.
- \*2 FX5CPU does not support serial communication connection.
- \*3 Connection to the Ethernet interface module of a programmable controller is not supported.

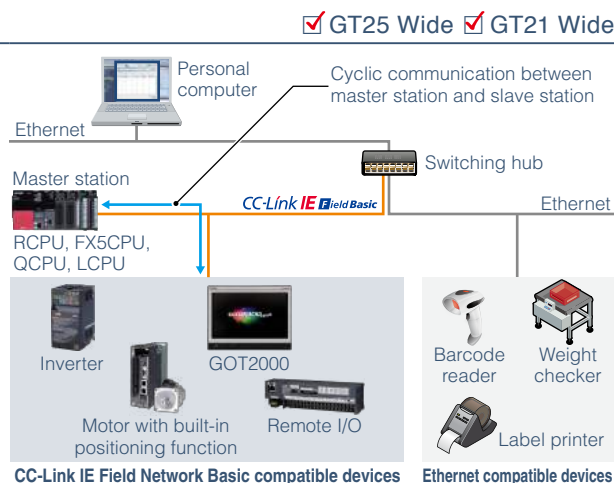
☑ GT25 Wide ☐ GT21 Wide

## Highly flexible system configuration

### Support CC-Link IE Field Network Basic

Use the standard Ethernet interface and connect GOT with CC-Link IE Field Network Basic compatible devices. Cyclic communication is supported. Ethernet TCP/IP communication can be used together with CC-Link IE Field Network Basic so that you can design more flexible system.

\* For the details, please refer to the Technical Bulletin No. GOT-A-0104.

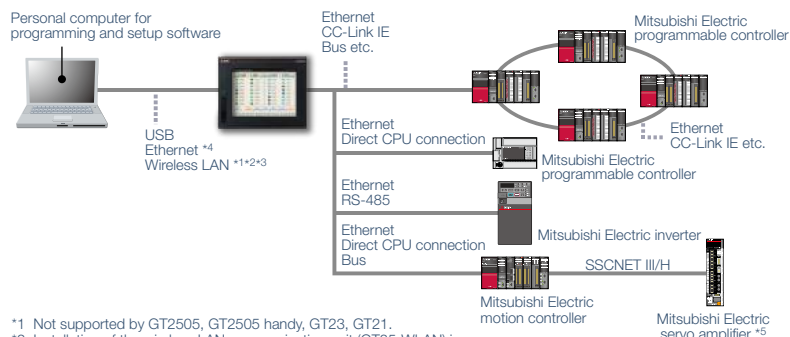


☑ GT25 Wide ☑ GT21 Wide

## Easy debugging

### FA transparent function

By connecting a personal computer to the front USB interface on the GOT, you can use the GOT as a transparent gateway to enable programming, startup, and adjustment of industrial devices. Users do not have to bother with opening the cabinet or changing cable connections.



- \*1 Not supported by GT2505, GT2505 handy, GT23, GT21.
- \*2 Installation of the wireless LAN communication unit (GT25-WLAN) is required on the GOT.
- \*3 For the countries where the wireless LAN communication unit can be used and other details, please refer to page 23.
- \*4 Not supported by GT2505, GT2505 handy, GT23, and GT21 when the GOT is connected to controllers via Ethernet connection.
- \*5 GT21 does not support connection to Mitsubishi Electric servo amplifiers.

☑ GT25 Wide ☑ GT21 Wide

### Specification details and restrictions

For the supported connection types and necessary option devices, please refer to the Graphic Operation Terminal GOT2000 Series/ GOT SIMPLE Series Catalog (L(NA)08270ENG) or the relevant product manual.



# Support screen creation and globalization

Various reuse features help you reduce time for screen creation.

A convenient tool will help you more with your multi-language screen creation.



## HMI/GOT Screen Design Software

### Professional designs in just a few clicks

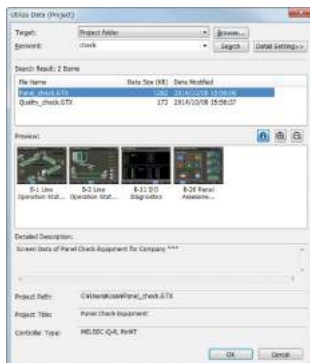
This integrated software is used to create professional screen designs for GOTs. Developed with the concepts of simplicity, sleekness, and user-friendliness in mind, this is a powerful tool that pushes boundaries and delivers endless design possibilities.

### GOT Screen Design Software MELSOFT GT Works3



### Utilize data (Projects)

Reuse all data from previous projects.



### Utilize data (Screens)

Reuse individual screens from past or sample projects. The settings are also applied and reused so that you can create project data easily.



### Search by target/category/keyword

Select a search target, category, or keyword and you can quickly find the screen you need.

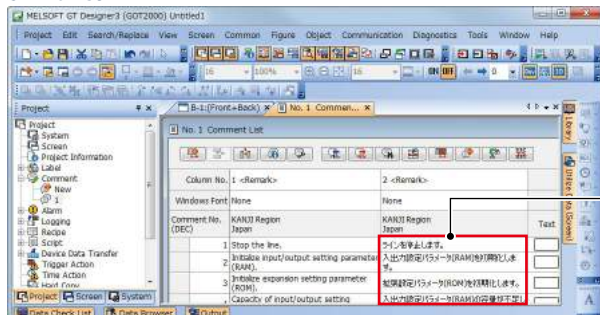
### Category list



## FA Term Translation Tool

This is the software to translate comments (words, sentences) that are used in GT Works3 and other MELSOFT applications using the FA Term Translation Dictionary provided by Mitsubishi Electric. It can be used even if your computer is not connected to the Internet. You can create your own dictionary and switch dictionaries depending on your needs. The software supports creation of multiple language screens.

### GT Works3



### FA Term Translation Tool



1 Copy comments to translate (e.g. from GT Works3) and paste them to the FA Term Translation Tool window

2 Translate comments

Check a checkbox to save it to the dictionary

3 Copy the translated results and paste them to GT Works3



It is easy to create language switching screens

### Specification details and restrictions

For the supported connection types and necessary option devices, please refer to the Graphic Operation Terminal GOT2000 Series/ GOT SIMPLE Series Catalog (L(NA)08270ENG) or the relevant product manual.

# Function list

To use new functions, GT Works3 Version1.250L or later is required. Some functions are supported by GT27 only.  
For details of functions, supported controllers, and connection types, please refer to the GOT2000/GOT SIMPLE Series Manual or Help.  
●: Supported —: Not supported ○: Option devices required

Category	Function name	Option devices	GT25		GT21	
			Wide model	Standard model	Wide model	Standard model
Figure/object functions	Figure		●	●	●	●
	Logo text		●	●	●	●
	Outline font		●	●	●	—
	Touch switch		●	●	●	●
	Lamp		●	●	●	●
	Numerical display, Numerical input		●	●	●	●
	Text display, Text input		●	●	●	●
	Date display, Time display	*7	●	●	●	●
	Comment display		●	●	●	●
	Parts display	*7	●	●	●	●*5
	Parts movement	*7	●	●	●	●*5
	Historical data list display	*7	●	●	●	●*5
	Simple alarm display		●	●	●	●
	System alarm display		●	●	—	—
	Alarm display (user)	*7	●	●	●	●*5
	Alarm display (system)	*7	●	●	—	—
	Recipe display (record list)		●	●	●	●
	Graph		●	●	●	●
	Historical trend graph	*7	●	●	●	●*5
	Graphical meter		●	●	●	●
Functions performed on background GOT	Level, Panelmeter		●	●	●	●
	Slider		●	●	●	●
	Document display	○	●	●	—	—
	Script parts		●	●	●	●
	Logging	*7	●	●	●	●*2
	Recipe	*7	●	●	●	●*5
	Device data transfer		●	●	●	●
	Trigger action		●	●	●	●
	Time action	*7	●	●	●	●
	File output	*7	●	●	●	●*2
	Serial printer output		●	●	●	●*2
	Ethernet printer output		●	●	●	●*4
	PictBridge printer output	○	—	●*9	—	—
	Project script, Screen script		●	●	●	●
	Object script		●	●	—	—
	Barcode function		●	●	●	●*2
	RFID function		●	●	●	●*2
	GOT Mobile function	○	●	●	—	—
	VNC server function	○	●	●	—	—
	Remote personal computer operation function (Ethernet)	○	●	●	—	—
Functions used with peripheral devices	Remote personal computer operation function (serial)	○	—	—	—	—
	Video display function	○	—	—	—	—
	RGB display function	○	—	—	—	—
	Multimedia function	○	—	—	—	—
	External I/O function	○	—	●*9	—	—
	Operation panel function	○	—	●*9	—	—
	Video output function	NEW ○	—	—	—	—
	RGB output function	○	—	—	—	—
	File output	*7	●	●	—	—
	Serial printer output	*7	●	●	●	●*2
	Ethernet printer output	*7	●	●	●	●*4
	PictBridge printer output	○	—	●*9	—	—
	Sound output function	○*8	●	●*9	—	—
	Server function, Client function		●	●	—	—
	Mail send function		●	●	—	—
	Network drive function		●	●	—	—
	FTP server function	*7	●	●	●	●*4
	File transfer function (FTP transfer)	○	●	●	●	●*4
	File transfer function (GOT internal transfer)	○	●	●	—	—
	MES interface function	○	●	●	—	—
	Wireless LAN function	○	●	●*9	—	—
	USB mouse, USB keyboard		●	●	●	—

Category	Function name	Option devices	GT25		GT21	
			Wide model	Standard model	Wide model	Standard model
GOT functions	Base screen		●	●	●	●
	Overlap window		●	●	●	●
	Superimpose window		●	●	●	●
	Dialog window		●	●	●	●
	Mobile screen		●	●	—	—
	Key window		●	●	●	●
	Language switching		●	●	●	●
	System information		●	●	●	●
	Operator authentication function	*7	●	●	●	●*5
	Operation log	○	●	●	NEW	—
	Startup logo		●	●	●	●
	KANA KANJI conversion		●	●	—	—
	FA transparent		●	●	●	●
	SoftGOT-GOT link	○	●	●	—	—
	Backup/Restoration	○	●	●	●	●*2
	Multi-channel function		4 channels (No units can be mounted)	4 channels (Up to 3 units *9)	2 channels (No units can be mounted)	2 channels (No units can be mounted)
	Station No. switching		●	●	●	●
	GOT network interaction		●	●	—	—
	Screen gesture function		—	—	—	—
	Object gesture function		—	—	—	—
	Security key authentication function		●	●	—	—
Maintenance functions	IP filter function		●	●	●	●
	File manager	*7	●	●	—	—
	Vertical display *1		(Rotate 90° to left)	(Rotate 90° to left *10)	(Rotate 90° to left)	(Rotate 90° to right)
	Vision sensor monitor	NEW	●	●	—	—
	Device monitor	*7	●	●	●	●
	Sequence program monitor (iQ-R ladder)	○	●	●	—	—
	Sequence program monitor (Ladder)	○	●	●	—	—
	Sequence program monitor (SFC)	○	●	●	—	—
	Network monitor		●	●	—	—
	CC-Link IE Field Network diagnostics		●	●	—	—
	Intelligent module monitor		●	●	—	—
	Drive recorder	*7	●	●	—	—
	Servo amplifier graph	*7	●	●	—	—
	Motion program editor		NEW ●*6	●*6	—	—
	Motion program I/O	○	NEW ●*6	●*6	—	—
	Servo amplifier monitor		●	●	—	—
	R motion monitor		●	●	—	—
	Q motion monitor		●	●	—	—
	Motion SFC monitor	○	●	●	—	—
	CNC monitor 2		—	●	—	—
	CNC monitor		—	●*6	—	—
	CNC data I/O	○	—	●*6	—	—
	CNC machining program edit		—	●*6	—	—
	Log viewer	*7	●	●	—	—
	FX list editor		—	●	●	●*3
	FX ladder monitor		●	●	—	—
	iQSS utility	○	●	●	—	—
	System launcher		●	●	—	—
	System launcher (servo network)		●	●	—	—
	MELSEC-L troubleshooting		●	●	—	—
	GOT offline monitor	NEW *7	●	●	—	—

\*1 Remote personal computer operation function (Ethernet) cannot be used. The following screens are displayed horizontally: utility screen, monitor and data management screens that are displayed from the utility screen (sequence program monitor, etc.). For the details of other GOT operations when placed vertically, please refer to the relevant product manual or the Help.

\*2 Excluding GT2103-PMBLS.

\*3 GT2104-RTBD only.

\*4 GT2104-RTBD, GT2103-PMBD only.

\*5 On GT2103-PMBLS, only the functions that do not require SD memory card can be used.

\*6 Only the GOTs with SVGA or higher resolution are supported.

\*7 An SD memory card, a USB memory, or a battery is required depending on conditions of use.

\*8 The sound output unit is required for the standard models. GT25 wide models have a built-in sound output interface so that the unit is not required.

\*9 Excluding GT2505-VTBD, GT2506HS-VTBD, and GT2505HS-VTBD.

\*10 To install GT2505-VTBD vertically, rotate the unit 90° to the right.

# Specifications - GT25 wide model

## General specifications

Item	Specifications					
Operating ambient temperature *1	0 °C to 55 °C *5					
Storage ambient temperature	-20 °C to 60 °C					
Operating ambient humidity	10% RH to 90% RH, non-condensing					
Storage ambient humidity	10% RH to 90% RH, non-condensing					
Vibration resistance	Compliant with JIS B 3502 and IEC 61131-2		Frequency	Acceleration	Half amplitude	Sweep count 10 times in each X, Y, or Z direction
		Under intermittent vibration	5 to 8.4 Hz 8.4 to 150 Hz	— 9.8 m/s <sup>2</sup>	3.5 mm —	
		Under continuous vibration	5 to 8.4 Hz 8.4 to 150 Hz	— 4.9 m/s <sup>2</sup>	1.75 mm —	—
Shock resistance	Compliant with JIS B 3502 and IEC 61131-2 (147 m/s <sup>2</sup> (15G), 3 times in each X, Y, or Z direction)					
Operating atmosphere	No greasy fumes, corrosive gas, flammable gas, excessive conductive dust, and direct sunlight (as well as at storage)					
Operating altitude *2	2000 m or less					
Installation location	Inside control panel					
Overvoltage category *3	II or less					
Pollution degree *4	2 or less					
Cooling method	Self-cooling					
Grounding	Grounding with a ground resistance of 100 Ω or less by using a ground cable that has a cross-sectional area of 2 mm <sup>2</sup> or more. If impossible, connect the ground cable to the control panel.					

- \*1 Includes the temperature inside the enclosure of the control panel to which the GOT is installed.
- \*2 Do not use or store the GOT under a pressure higher than the atmospheric pressure at altitude 0 m. Doing so may cause a malfunction. Air purging by applying pressure to the control panel may create clearance between the surface sheet and the touch panel. This may cause the touch panel to be not sensitive enough or the sheet to come off.
- \*3 This indicates the section of the power supply to which the equipment is assumed to be connected between the public electrical power distribution network and the machinery within the premises. Category II applies to equipment that is supplied with power from fixed facilities. The withstand surge voltage for the equipment with the rated voltage up to 300 V is 2500 V.
- \*4 This indicates the occurrence rate of conductive material in an environment where a device is used. Pollution degree 2 indicates an environment where only non-conductive pollution occurs normally and a temporary conductivity caused by condensation shall be expected depending on the conditions.
- \*5 When a protective cover for oil is mounted on the GOT, the maximum operating ambient temperature must be 5 °C lower than the one described in the general specifications.

## Power supply specifications

Item		Specifications		
		GT2512-WXTBD GT2512-WXTSD	GT2510-WXTBD GT2510-WXTSD	GT2507-WTBD GT2507-WTSD
Power supply voltage		24 V DC (+25%, -20%)		
Power supply frequency		—		
Power consumption	Under the maximum load	20 W or less	16 W or less	
	Main unit	14 W	9 W	
	Main unit (backlight OFF)	8 W	5 W	
Inrush current		59 A or less (2 ms, ambient temperature: 25 °C, under the maximum load)		
Permissible instantaneous power failure time		5 ms or less		
Noise immunity		Noise voltage: 500 Vp-p, noise width: 1 μs, measured by a noise simulator with noise frequency ranging from 25 Hz to 60 Hz		
Withstand voltage		350 V AC for 1 minute across power terminals and earth		
Insulation resistance		500 V DC across power terminals and earth, 10 MΩ or more by an insulation resistance tester		

For the status of conforming to various standards and laws (CE, ATEX, UL/cUL, Class I Division 2, EAC, KC, KCs, and maritime certifications [ABS/BV/DNV GL/LR/NK/RINA]), please refer to the Mitsubishi Electric Factory Automation Global website ([www.MitsubishiElectric.com/fa](http://www.MitsubishiElectric.com/fa)).

Operate and store the GOT in environments without direct sunlight, high temperature, dust, humidity, and vibrations.

## Performance specifications

Item		Specifications					
		GT2512-WXTBD	GT2512-WXTSD	GT2510-WXTBD	GT2510-WXTSD	GT2507-WTBD	GT2507-WTSD
Display section *1*2	Display device	TFT color LCD					
	Screen size	12.1" widescreen		10.1" widescreen		7" widescreen	
	Resolution	WXGA: 1280 × 800 dots				WVGA: 800 × 480 dots	
	Display size	261.12 (10.28) (W) × 163.2 (6.43) (H) mm (inch)				152.40 (6.00) (W) × 91.44 (3.60) (H) mm (inch)	
	Number of displayed characters	16-dot standard font: 80 characters × 50 lines (two-byte characters) 12-dot standard font: 106 characters × 66 lines (two-byte characters)				16-dot standard font: 50 characters × 30 lines (two-byte characters) 12-dot standard font: 66 characters × 40 lines (two-byte characters)	
	Display color	65536 colors					
	Brightness adjustment	32 levels					
	Backlight	LED (Not replaceable)					
Backlight life *4	Approx. 50000 h (operating ambient temperature: 25 °C, display intensity: 50%)						
Touch panel *3	Type	Analog resistive film					
	Key size	Minimum 2 × 2 dots *8 (per key)					
	Simultaneous press	Not available *5 (Only 1 point can be touched.)					
	Life	1 million touches or more (operating force: 0.98 N or less)					
Panel color		Black	Silver *10	Black	Silver *10	Black	Silver *10
User memory	User memory capacity	Memory for storage (ROM): 32 MB Memory for operation (RAM): 128 MB					
	Life (number of write times)	100000 times					
Built-in clock precision		±90 seconds/month (ambient temperature: 25 °C)					
Battery		GT11-50BAT lithium battery					
	Life	Approx. 5 years (ambient temperature: 25 °C)					
Built-in interface	RS-232	1 channel Transmission speed: 115200, 57600, 38400, 19200, 9600, 4800 bps Connector shape: D-sub 9-pin (male)					
	RS-422/485	1 channel Transmission speed: 115200, 57600, 38400, 19200, 9600, 4800 bps Connector shape: D-sub 9-pin (female)					
	Ethernet	2 channel Data transfer method: 100BASE-TX, 10BASE-T Connector shape: RJ45 (modular jack) AUTO MDI/MDI-X					
	USB (host)	1 channel (rear face)					
		USB version: USB 2.0 (High-Speed 480 Mbps) Connector shape: USB-A					
	USB (device)	1 channel (front face)					
		USB version: USB 2.0 (High-Speed 480 Mbps) Connector shape: USB Mini-B					
	SD memory card	1 channel, SDHC compliant (maximum 32 GB)					
Wireless LAN communication unit interface	For installing a wireless LAN communication unit						
Sound output interface	1 channel, WAV format (16 bits, 8,000 kHz/16,000 kHz, monoral) applicable plug: φ3.5 stereo mini-plug (3-prong)						
Buzzer output		Single tone (tone and tone length adjustable)					
POWER LED		2 colors (blue and orange)					
Protective structure *6		Front: IP67F *7*9 Inside control panel: IP2X					
Safety standards, radio laws (as of March 2021)		CE, UL, cUL, EAC, KC					
Maritime certifications (as of March 2021)		ABS/BV/DNV GL/LR/NK/RINA					
External dimensions		299 (11.77) (W) × 219 (8.62) (H) × 48 (1.89) (D) mm (inch)		252 (9.92) (W) × 194 (7.64) (H) × 48 (1.89) (D) mm (inch)		189 (7.44) (W) × 142 (5.59) (H) × 48 (1.89) (D) mm (inch)	
Panel cut dimensions		290.5 (11.44) (W) × 210.5 (8.29) (H) mm (inch)		243.5 (9.59) (W) × 185.5 (7.30) (H) mm (inch)		180.5 (7.11) (W) × 133.5 (5.26) (H) mm (inch)	
Weight (excluding a fitting)		1.7 (3.7) kg (lb)		1.2 (2.6) kg (lb)		0.75 (1.7) kg (lb)	
Compatible software package		GT Works3 Version1.250L or later *11		GT Works3 Version1.175H or later *11			

- \*1 As a characteristic of liquid crystal display panels, bright dots (always lit) and dark dots (never lit) may appear on the panel. Since liquid crystal display panels comprise a great number of display elements, the appearance of bright and dark dots cannot be reduced to zero. Individual differences in liquid crystal display panels may cause differences in color, uneven brightness and flickering. Note that these phenomena are characteristics of liquid crystal display panels and it does not mean the products are defective or damaged.
- \*2 Flickering may occur due to vibration, shock, or the display colors.
- \*3 When a stylus is used, the touch panel has a life of 100 thousand touches. The stylus must satisfy the following specifications.  
• Material: polyacetal resin • Tip radius: 0.8 mm or more
- \*4 To prevent the display section from burning in and lengthen the backlight life, enable the screen save function and turn off the backlight.
- \*5 If you touch two points or more simultaneously on the touch panel, a touch switch near the touched points may operate unexpectedly. Do not touch two points or more simultaneously on the touch panel.
- \*6 Note that the structure does not guarantee protection in all users' environments. The GOT may not be used in certain environments where it is subjected to splashing oil or chemicals for a long period of time or soaked in oil mist.
- \*7 To conform to IP67F, close the USB environmental protection cover by pushing the USB mark firmly. (The GOT conforms to IP2X when the USB environmental protection cover is open.)
- \*8 The minimum size of a key that can be arranged. To ensure safe use of the product, the following settings are recommended.  
• Key size: 16 × 16 dots or larger • Distance between keys: 16 dots or more
- \*9 The suffix "F" of IP67F is a symbol that indicates protection rate against oil. It is described in the Appendix of Japanese Industrial Standard JIS C 0920.
- \*10 The lower part of the panel including the USB environmental protection cover is black.
- \*11 The supported version varies depending on the GOT model. To use new functions, GT Works3 Version1.250L or later is required.



# Specifications - GT21 wide model

## General specifications

Item	Specifications					
Operating ambient temperature *1	0 °C to 55 °C (horizontal installation) *6, 0 °C to 50 °C (vertical installation)					
Storage ambient temperature	-20 °C to 60 °C					
Operating ambient humidity	10% RH to 90% RH, non-condensing *2					
Storage ambient humidity	10% RH to 90% RH, non-condensing *2					
Vibration resistance	Compliant with JIS B 3502 and IEC 61131-2		Frequency	Acceleration	Half amplitude	Sweep count
		Under intermittent vibration	5 to 8.4 Hz	—	3.5 mm	10 times in each X, Y, or Z direction
			8.4 to 150 Hz	9.8 m/s <sup>2</sup>	—	
		Under continuous vibration	5 to 8.4 Hz	—	1.75 mm	—
		8.4 to 150 Hz	4.9 m/s <sup>2</sup>	—		
Shock resistance	Compliant with JIS B 3502 and IEC 61131-2 (147 m/s <sup>2</sup> (15G), 3 times in each X, Y, or Z direction)					
Operating atmosphere	No greasy fumes, corrosive gas, flammable gas, excessive conductive dust, and direct sunlight (as well as at storage)					
Operating altitude *3	2000 m or less					
Installation location	Inside control panel					
Overvoltage category *4	II or less					
Pollution degree *5	2 or less					
Cooling method	Self-cooling					
Grounding	Grounding with a ground resistance of 100 Ω or less by using a ground cable that has a cross-sectional area of 2 mm <sup>2</sup> or more. If impossible, connect the ground cable to the control panel.					

- \*1 Includes the temperature inside the enclosure of the control panel to which the GOT is installed.
- \*2 If the ambient temperature exceeds 40 °C, the absolute humidity must not exceed 90% RH at 40 °C.
- \*3 Do not use or store the GOT under a pressure higher than the atmospheric pressure at altitude 0 m. Doing so may cause a malfunction. Air purging by applying pressure to the control panel may create clearance between the surface sheet and the touch panel. This may cause the touch panel to be not sensitive enough or the sheet to come off.
- \*4 This indicates the section of the power supply to which the equipment is assumed to be connected between the public electrical power distribution network and the machinery within the premises. Category II applies to equipment that is supplied with power from fixed facilities. The withstand surge voltage for the equipment with the rated voltage up to 300 V is 2500 V.
- \*5 This indicates the occurrence rate of conductive material in an environment where a device is used. Pollution degree 2 indicates an environment where only non-conductive pollution occurs normally and a temporary conductivity caused by condensation shall be expected depending on the conditions.
- \*6 When a protective cover for oil is mounted on the GOT, the maximum operating ambient temperature must be 5 °C lower than the one described in the general specifications.

## Performance specifications

Item		Specifications	
		GT2107-WTBD	GT2107-WTSD
Display section *1*2	Display device	TFT color LCD	
	Screen size	7" widescreen	
	Resolution	WVGA: 800 × 480 dots	
	Display size	152.40 (6.00) (W) × 91.44 (3.60) (H) mm (inch)	
	Number of displayed characters	16-dot standard font: 50 characters × 30 lines (two-byte characters) 12-dot standard font: 66 characters × 40 lines (two-byte characters)	
	Display color	65536 colors	
	Brightness adjustment	32 levels	
	Backlight	LED (Not replaceable)	
Backlight life *4	Approx. 50000 h (operating ambient temperature: 25 °C, display intensity: 50%)		
Touch panel *3	Type	Analog resistive film	
	Key size	Minimum 2 × 2 dots *8 (per key)	
	Simultaneous press	Not available *5 (Only 1 point can be touched.)	
	Life	1 million touches or more (operating force: 0.98 N or less)	
Panel color		Black	Silver *10
User memory	User memory capacity	Memory for storage (ROM): 15 MB	
	Life (number of write times)	100000 times	
Built-in clock precision		±45 seconds/month (ambient temperature: 25 °C)	
Battery	Life	GT11-50BAT lithium battery	
		Approx. 5 years (ambient temperature: 25 °C)	
Built-in interface	RS-232	1 channel Transmission speed: 115200, 57600, 38400, 19200, 9600, 4800 bps Connector shape: D-sub 9-pin (male)	
	RS-422/485	1 channel Transmission speed: 115200, 57600, 38400, 19200, 9600, 4800 bps Connector shape: D-sub 9-pin (female) Terminating resistor: OPEN/110 Ω/330 Ω (switched with the terminating resistor setting switch)	
	Ethernet	1 channel Data transfer method: 100BASE-TX, 10BASE-T Connector shape: RJ45 (modular jack) AUTO MDI/MDI-X	
	USB (host)	1 channel (rear face)	
		USB version: USB 1.1 (Full-Speed 12 Mbps) Connector shape: USB-A	
	USB (device)	1 channel (front face)	
		USB version: USB 1.1 (Full-Speed 12 Mbps) Connector shape: USB Mini-B	
	SD memory card	1 channel, SDHC compliant (maximum 32 GB)	
Wireless LAN communication unit interface	—		
Sound output interface	—		
Buzzer output		Single tone (tone length adjustable)	
POWER LED		—	
Protective structure *6		Front: IP67F *7*9 Inside control panel: IP2X	
Safety standards, radio laws (as of March 2021)		CE, UL, cUL, EAC, KC	
Maritime certifications (as of March 2021)		—	
External dimensions		189 (7.44) (W) × 142 (5.59) (H) × 48 (1.89) (D) mm (inch)	
Panel cut dimensions		180.5 (7.11) (W) × 133.5 (5.26) (H) mm (inch)	
Weight (excluding a fitting)		0.7 (1.54) kg (lb)	
Compatible software package		GT Works3 Version 1.170C or later *11	

- \*1 As a characteristic of liquid crystal display panels, bright dots (always lit) and dark dots (never lit) may appear on the panel. Since liquid crystal display panels comprise a great number of display elements, the appearance of bright and dark dots cannot be reduced to zero. Individual differences in liquid crystal display panels may cause differences in color, uneven brightness and flickering. Note that these phenomena are characteristics of liquid crystal display panels and it does not mean the products are defective or damaged.
- \*2 Flickering may occur due to vibration, shock, or the display colors.
- \*3 When a stylus is used, the touch panel has a life of 100 thousand touches. The stylus must satisfy the following specifications.  
• Material: polyacetal resin • Tip radius: 0.8 mm or more
- \*4 To prevent the display section from burning in and lengthen the backlight life, enable the screen save function and turn off the backlight.
- \*5 If you touch two points or more simultaneously on the touch panel, a touch switch near the touched points may operate unexpectedly. Do not touch two points or more simultaneously on the touch panel.
- \*6 Note that the structure does not guarantee protection in all users' environments. The GOT may not be used in certain environments where it is subjected to splashing oil or chemicals for a long period of time or soaked in oil mist.
- \*7 To conform to IP67F, close the USB environmental protection cover by pushing the USB mark firmly. (The GOT conforms to IP2X when the USB environmental protection cover is open.)
- \*8 The minimum size of a key that can be arranged. To ensure safe use of the product, the following settings are recommended.  
• Key size: 16 × 16 dots or larger • Distance between keys: 16 dots or more
- \*9 The suffix "F" of IP67F is a symbol that indicates protection rate against oil. It is described in the Appendix of Japanese Industrial Standard JIS C 0920.
- \*10 The lower part of the panel including the USB environmental protection cover is black.
- \*11 The supported version varies depending on the GOT model. To use new functions, GT Works3 Version 1.250L or later is required.

## Power supply specifications

Item	Specifications	
	GT2107-WTBD	GT2107-WTSD
Power supply voltage	24 V DC (+10%, -15%)	
Power supply frequency	—	
Power consumption	Under the maximum load	11.3 W or less
	Main unit (backlight OFF)	7.0 W
Inrush current	35 A or less (3 ms, ambient temperature: 25 °C, under the maximum load)	
Permissible instantaneous power failure time	5 ms or less	
Noise immunity	Noise voltage: 1000 Vp-p, noise width: 1 μs, measured by a noise simulator with noise frequency ranging from 30 Hz to 100 Hz	
Withstand voltage	500 V AC for 1 minute across power terminals and earth	
Insulation resistance	500 V DC across power terminals and earth, 10 MΩ or more by an insulation resistance tester	

For the status of conforming to various standards and laws (CE, ATEX, UL/cUL, Class I Division 2, EAC, KC, KCs, and maritime certifications (ABS/BV/DNV GL/LR/NK/RINA)), please refer to the Mitsubishi Electric Factory Automation Global website ([www.MitsubishiElectric.com/fa](http://www.MitsubishiElectric.com/fa)).

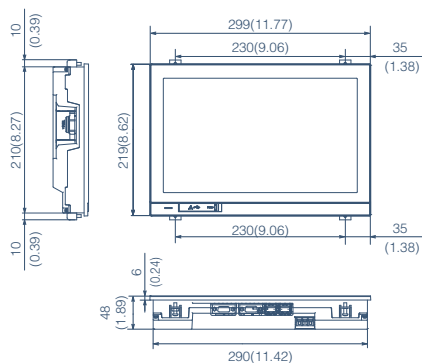
Operate and store the GOT in environments without direct sunlight, high temperature, dust, humidity, and vibrations.

## External dimensions

### GT25 wide model

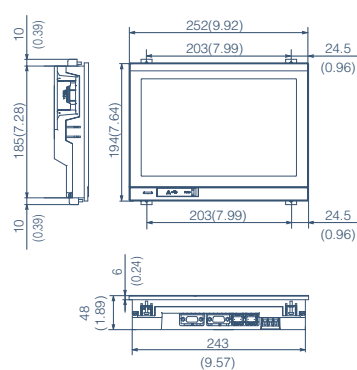
#### GT2512-WXT□D **NEW**

Unit: mm (inch)



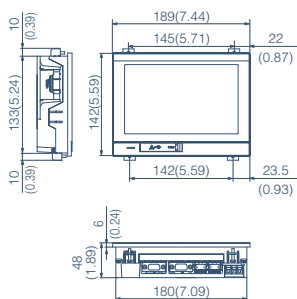
#### GT2510-WXT□D

Unit: mm (inch)



#### GT2507-WT□D

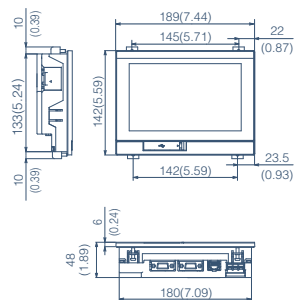
Unit: mm (inch)



### GT21 wide model

#### GT2107-WT□D

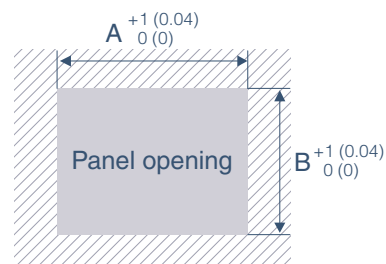
Unit: mm (inch)



## Panel cut dimensions

Unit: mm (inch)

Screen size	Model	A	B
12.1" widescreen	GT2512-WXT□D	290.5 (11.44)	210.5 (8.29)
10.1" widescreen	GT2510-WXT□D	243.5 (9.59)	185.5 (7.30)
7" widescreen	GT2507-WT□D GT2107-WT□D	180.5 (7.11)	133.5 (5.26)



\* Panel thickness: 1.6 mm to 4 mm  
(0.06 inch to 0.16 inch)

## Product list

### GOTs

Classification		Model		Screen size	Display section Display color	Panel color	Power
Wide model	GT25	GT2512-WXTBD	NEW	12.1" WXGA	TFT color 65536 colors	Black	24 V DC
		GT2512-WXTSD	NEW			Silver *1	
		GT2510-WXTBD	10.1" WXGA	Black			
		GT2510-WXTSD		Silver *1			
		GT2507-WTBD	7" WVGA	Black			
		GT2507-WTSD		Silver *1			
	GT21	GT2107-WTBD	7" WVGA	TFT color 65536 colors	Black	24 V DC	
		GT2107-WTSD			Silver *1		

\*1 The lower part of the panel including the USB environmental protection cover is black.

### Communication units

Product name	Model	Specifications	Supported model	
			GT25 Wide	GT21 Wide
Wireless LAN communication unit *1	GT25-WLAN	IEEE802.11b/g/n compliant, built-in antenna, wireless LAN access point (base station) *2, station (client), connection to personal computer, tablet, smartphone Compliance with*3: Japan Radio Law, FCC standards, RE Directive*4 (R&TTE Directive), SRRC, KC	●	—

\*1 Data transfer in wireless LAN communication may not be as stable as that in cable communication. A packet loss may occur depending on the surrounding environment and the installation location. Be sure to perform a confirmation of operation before using this product.

\*2 When [Operation Mode] is set to [Access Point] in [Wireless LAN Setting] of GT Designer3, up to five stations are connectable.

\*3 The product with hardware version A complies with Japan Radio Law and can be used only in Japan. The product with hardware version B or later complies with FCC standards and RE Directive and can be used in Japan, the United States, the EU member states, Switzerland, Norway, Iceland, and Liechtenstein. The product with hardware version D or later complies with SRRC and KC and can be used in Japan, the United States, the EU member states, Switzerland, Norway, Iceland, Liechtenstein, China (excluding Hong Kong, Macau, Taiwan), and South Korea. For the latest information about countries where the unit can be used, please refer to the Mitsubishi Electric Factory Automation Global website ([www.MitsubishiElectric.com/fa](http://www.MitsubishiElectric.com/fa)).

\*4 The wireless LAN communication unit has conformed to the RE directive since March 31, 2017.

### Options

Product name	Model	Specifications	Supported model	
			GT25 Wide	GT21 Wide
Protective sheet	GT25-12WPSGC <b>NEW</b>	For 12.1" wide models	●	—
	GT25-10WPSGC	For 10.1" wide models	●	—
	GT21-07WPSGC	For 7" wide models	●	●
	GT25-12WPSCC <b>NEW</b>	For 12.1" wide models	●	—
	GT25-10WPSCC	For 10.1" wide models	●	—
	GT21-07WPSCC	For 7" wide models	●	●
Stand	GT25-10WSTAND	For 10.1" wide models	●	—
	GT21-07WSTAND	For 7" wide models	●	●
USB environmental protection cover	GT21-WUCOV	For 12.1" wide/10.1" wide/7" wide models Environmental protection cover for the USB interface on the GOT front face (for replacement)	●	●
Protective cover for oil *3	GT21-12WPCO <b>NEW</b>	For 12.1" wide models	●	—
	GT21-10WPCO	For 10.1" wide models	●	—
	GT21-07WPCO	For 7" wide models	●	●
SD memory card	NZ1MEM-2GBSD	SD memory card for GOT, 2 GB	●	●
	NZ1MEM-4GBSD	SDHC memory card for GOT, 4 GB	●	●
	NZ1MEM-8GBSD	SDHC memory card for GOT, 8 GB	●	●
	NZ1MEM-16GBSD	SDHC memory card for GOT, 16 GB	●	●
Battery	GT11-50BAT	Battery for backup of SRAM data, clock data, and system status log data *2.	● (For replacement)	● (For replacement)
Panel-mounted USB port extension	GT14-C10EXUSB-4S	Cable length: 1m, for routing the USB port (host) of the GOT rear face to the front side of the control panel	●	●
USB cable (data transfer cable)	GT09-C30USB-5P	Cable length: 3m, for connecting a personal computer (screen design software) and GOT	●	●

\*1 The protective sheet is shaped not to cover the USB environmental protection cover.

\*2 GT21 does not support the system status log data backup function.

\*3 Check if the protective cover for oil can be used in the actual environment before use. When using the cover, the front USB interface cannot be used.



## Software

Product name	Model	Description			Supported model	
					GT25 Wide	GT21 Wide
HMI/GOT Screen Design Software MELSOFT GT Works3	SW1DND-GTWK3-E	English Version	Standard license product	DVD-ROM	●	●
	SW1DND-GTWK3-EA		Volume license product *1*5			
	SW1DND-GTWK3-EAZ		Additional license product *1*2			
GT Works Text to Speech License *4	SW1DND-GTVO-M	Standard license product			●	—
VNC Server Function License *3	GT25-VNCSKEY-1	1 license			●	●
	GT25-VNCSKEY-5	5 licenses			●	●
	GT25-VNCSKEY-10	10 licenses			●	●
	GT25-VNCSKEY-20	20 licenses			●	●
GOT Mobile Function License *3	GT25-WEBSKEY-1	1 license			●	—
	GT25-WEBSKEY-5	5 licenses			●	—
	GT25-WEBSKEY-10	10 licenses			●	—
	GT25-WEBSKEY-20	20 licenses			●	—

\*1 The desired number of licenses (2 or more) can be purchased. For details, please contact your local sales office.

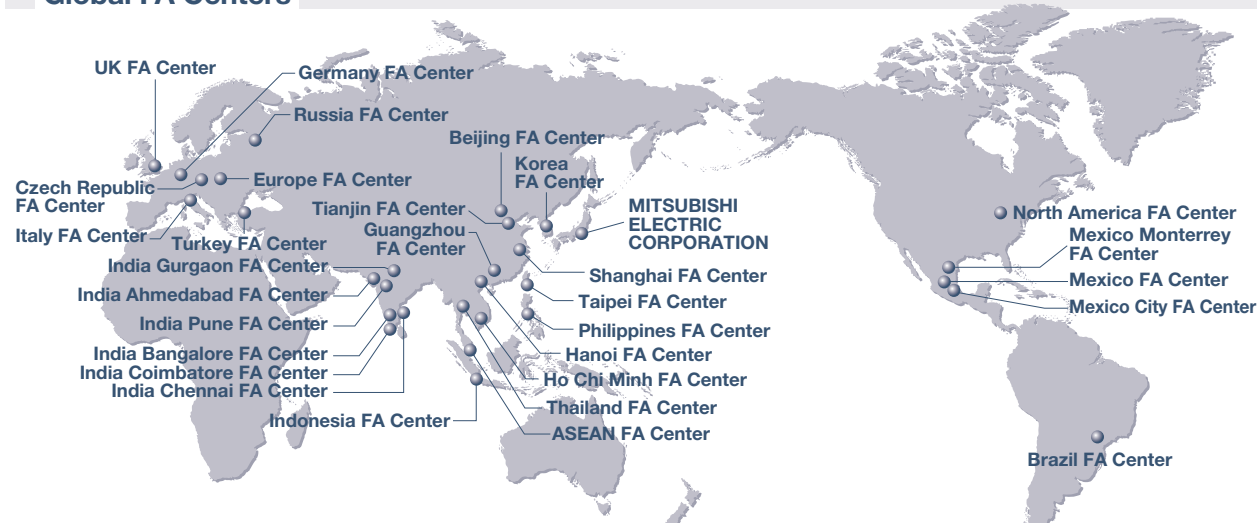
\*2 This product does not include the DVD-ROM. Only the license certificate with the product ID No. is issued.

\*3 Each GOT requires one license.

\*4 To edit sound files, each personal computer requires one license.

\*5 Volume license product is not sold separately and should be purchased with the standard license product.

## Global FA Centers



**China Mainland**  
**Shanghai FA Center**  
**Mitsubishi Electric Automation (China) Ltd.**  
 Mitsubishi Electric Automation Center, No.1386  
 Hongqiao Road, Shanghai, China  
 Tel: +86-21-2322-3030 / Fax: +86-21-2322-3000(9611#)

**Beijing FA Center**  
**Mitsubishi Electric Automation (China) Ltd.**  
**Beijing Branch**  
 5/F, ONE INDIGO, 20 Jiuxianqiao Road Chaoyang  
 District, Beijing, China  
 Tel: +86-10-6518-8830 / Fax: +86-10-6518-2938

**Tianjin FA Center**  
**Mitsubishi Electric Automation (China) Ltd.**  
**Tianjin Branch**  
 Room 3203 City Tower, No.35, Youyi Road, Hexi  
 District, Tianjin, China  
 Tel: +86-22-2813-1015 / Fax: +86-22-2813-1017

**Guangzhou FA Center**  
**Mitsubishi Electric Automation (China) Ltd.**  
**Guangzhou Branch**  
 Room 1609, North Tower, The Hub Center, No.1068,  
 Xingang East Road, Haizhu District, Guangzhou, China  
 Tel: +86-20-8923-6730 / Fax: +86-20-8923-6715

**Taiwan**  
**Taipei FA Center**  
**SETSUYO ENTERPRISE CO., LTD.**  
 3F, No.105, Wugong 3rd Road, Wugu District,  
 New Taipei City 24889, Taiwan  
 Tel: +886-2-2299-9917 / Fax: +886-2-2299-9963

**Korea**  
**Korea FA Center**  
**Mitsubishi Electric Automation Korea Co., Ltd.**  
 8F, Gangseo Hangang Xi-tower A, 401,  
 Yangcheon-ro, Gangseo-Gu, Seoul 07528, Korea  
 Tel: +82-2-3660-9632 / Fax: +82-2-3664-0475

**ASEAN**  
**ASEAN FA Center**  
**Mitsubishi Electric Asia Pte. Ltd.**  
 307 Alexandra Road, Mitsubishi Electric Building,  
 Singapore 159943  
 Tel: +65-6470-2475 / Fax: +65-6476-7439

**Indonesia**  
**Indonesia FA Center**  
**PT. Mitsubishi Electric Indonesia Cikarang Office**  
 Jl. Kenari Raya Blok G2-07A Delta Silicon 5,  
 Lippo Cikarang - Bekasi 17550, Indonesia  
 Tel: +62-21-2961-7797 / Fax: +62-21-2961-7794

**Vietnam**  
**Hanoi FA Center**  
**Mitsubishi Electric Vietnam Co., LTD.**  
**Hanoi Branch**  
 6th Floor, Detech Tower, 8 Ton That Thuyet Street,  
 My Dinh 2 Ward, Nam Tu Liem District, Hanoi,  
 Vietnam  
 Tel: +84-24-3937-8075 / Fax: +84-24-3937-8076

**Ho Chi Minh FA Center**  
**Mitsubishi Electric Vietnam Co., LTD.**  
**Ho Chi Minh Head Office**  
 11th & 12th Floor, Viettel Tower B, 285 Cach Mang  
 Thang 8 Street, Ward 12, District 10, Ho Chi Minh City,  
 Vietnam  
 Tel: +84-28-3910-5945 / Fax: +84-28-3910-5947

**Thailand**  
**Thailand FA Center**  
**MELCO Factory Automation Philippines Inc.**  
**(Thailand) Co., Ltd.**  
 101, True Digital Park Office, 5th Floor, Sukhumvit Road,  
 Bangkok, Phra Khanong, Bangkok 10260, Thailand  
 Tel: +66-2092-8600 / Fax: +66-2043-1231-33

**Philippines**  
**Philippines FA Center**  
**MELCO Factory Automation Philippines Inc.**  
 128, Lopez-Rizal St. Brgy. Highway Hills,  
 Mandaluyong City, MM, Philippines  
 Tel: +63-(0)2-8256-8042 / Fax: -

**India**  
**India Pune FA Center**  
**Mitsubishi Electric India Pvt. Ltd.**  
**Pune Branch**  
 Emerald House, EL-3, J Block, M.I.D.C., Bhosari,  
 Pune - 411026, Maharashtra, India  
 Tel: +91-20-2710-2000 / Fax: +91-20-2710-2100

**India Gurgaon FA Center**  
**Mitsubishi Electric India Pvt. Ltd.**  
**Gurgaon Second office MEI-GGN (UDY)**  
 Plot 517, Ground floor, Udyog Vihar Phase 3,  
 Gurugram 122008, Haryana, India  
 Tel: +91-124-463-0300 / Fax: +91-124-463-0399

**India Bangalore FA Center**  
**Mitsubishi Electric India Pvt. Ltd.**  
**Bangalore Branch**  
 Prestige Emerald, 6th Floor, Municipal No.2,  
 Madras Bank Road, Bangalore - 560001, Karnataka, India  
 Tel: +91-80-4020-1600 / Fax: +91-80-4020-1699

**India Chennai FA Center**  
**Mitsubishi Electric India Pvt. Ltd.**  
**Chennai Branch**  
 Citilights Corporate Centre No.1, Vivekananda  
 Road, Srinivasa Nagar, Chetpet, Chennai - 600031,  
 Tamil Nadu, India  
 Tel: +91-44-4554-8772 / Fax: +91-44-4554-8773

**India Ahmedabad FA Center**  
**Mitsubishi Electric India Pvt. Ltd.**  
**Ahmedabad Branch**  
 B/4, 3rd Floor, SAFAL Profitaire, Corporate Road,  
 Prahaladnagar, Satellite, Ahmedabad - 380015,  
 Gujarat, India  
 Tel: +91-79-6512-0063 / Fax: -

**India Coimbatore FA Center**  
**Mitsubishi Electric India Pvt. Ltd.**  
**Coimbatore Branch**  
 BMH Srinivas, 2nd Floor, Door No.1604, Trichy Road,  
 Near ICICI Bank, Coimbatore - 641018, Tamil Nadu, India  
 Tel: +91-422-438-5606 / Fax: -

**Americas**  
**North America FA Center**  
**Mitsubishi Electric Automation, Inc.**  
 500 Corporate Woods Parkway, Vernon Hills, IL 60061, U.S.A.  
 Tel: +1-847-478-2100 / Fax: +1-847-478-2253

**Mexico**  
**Mexico FA Center**  
**Mitsubishi Electric Automation, Inc.**  
**Queretaro Office**  
 Parque Tecnológico Innovación Queretaro Lateral Carretera  
 Estatal 431, Km 2+200, Lote 91 Módulos 1 y 2 Hacienda la  
 Machorra, CP 76246, El Marques, Queretaro, Mexico  
 Tel: +52-442-153-6014 / Fax: -

**Mexico City FA Center**  
**Mitsubishi Electric Automation, Inc.**  
**Mexico Branch**  
 Mariano Escobedo #69, Col. Zona Industrial,  
 Tlalnepanitla Edo. Mexico, C.P.54030  
 Tel: +52-55-3067-7511 / Fax: -

**Mexico Monterrey FA Center**  
**Mitsubishi Electric Automation, Inc.**  
**Monterrey Office**  
 Plaza Mirage, Av. Gonzalitos 460 Sur, Local 28, Col. San  
 Jeronimo, Monterrey, Nuevo Leon, C.P. 64640, Mexico  
 Tel: +52-55-3067-7521 / Fax: -

**Brazil**  
**Brazil FA Center**  
**Mitsubishi Electric do Brasil Comercio e**  
**Servicos Ltda.**  
 Avenida Adelino Cardana, 293, 21 andar, Bethaville,  
 Barueri SP, Brasil  
 Tel: +55-11-4689-3000 / Fax: +55-11-4689-3016

**Europe**  
**Europe FA Center**  
**Mitsubishi Electric Europe B.V. Polish Branch**  
 ul. Krakowska 48, 32-083 Balice, Poland  
 Tel: +48-12-347-65-00 / Fax: -

**Germany FA Center**  
**Mitsubishi Electric Europe B.V. German Branch**  
 Mitsubishi-Electric-Platz 1, 40882 Ratingen, Germany  
 Tel: +49-2102-486-0 / Fax: +49-2102-486-1120

**UK FA Center**  
**Mitsubishi Electric Europe B.V. UK Branch**  
 Travellers Lane, Hatfield, Hertfordshire, AL10 8XB, U.K.  
 Tel: +44-1707-27-8780 / Fax: +44-1707-27-8695

**Italy FA Center**  
**Mitsubishi Electric Europe B.V. Italian Branch**  
 Centro Direzionale Colleoni - Palazzo Sirio, Viale  
 Colleoni 7, 20864 Agrate Brianza (MB), Italy  
 Tel: +39-039-60531 / Fax: +39-039-6053-312

**Czech Republic FA Center**  
**Mitsubishi Electric Europe B.V. Czech Branch**  
 Pekarska 621/7, 155 00 Praha 5, Czech Republic  
 Tel: +420-255-719-200 / Fax: -

**Russia FA Center**  
**Mitsubishi Electric (Russia) LLC**  
**St. Petersburg Branch**  
 Piskarevsky pr. 2, bld 2, lit "Sch", BC "Benusa",  
 office 720; 195027, St. Petersburg, Russia  
 Tel: +7-812-633-3497 / Fax: +7-812-633-3499

**Turkey FA Center**  
**Mitsubishi Electric Turkey A.S. Umranıye Branch**  
 Serifali Mah. Kale Sok. No:41 34775  
 Umranıye - Istanbul, Turkey  
 Tel: +90-216-969-2500 / Fax: +90-216-526-3995

#### Trademarks and registered trademarks

MELSOFT, GOT, CC-Link, CC-Link IE are either trademarks or registered trademarks of Mitsubishi Electric Corporation in Japan and other countries. ETHERNET is a registered trademark of Xerox Corp. SD and SDHC Logos are registered trademarks or trademarks of SD-3C, LLC. VNC is a registered trademark of RealVNC Ltd. in the United States and other countries. PictBridge is a registered trademark of Canon Inc. Android and Google Chrome are trademarks or registered trademarks of Google Inc. Safari and iPhone are trademarks of Apple Inc., registered in the U.S. and other countries. The iPhone trademark is used under license from AIPHONE CO., LTD. Other product and company names are either trademarks or registered trademarks of their respective owners.

The actual color may differ slightly from the pictures in this catalog.  
The actual display may differ from what are shown on GOT screen images.

#### Precautions before use

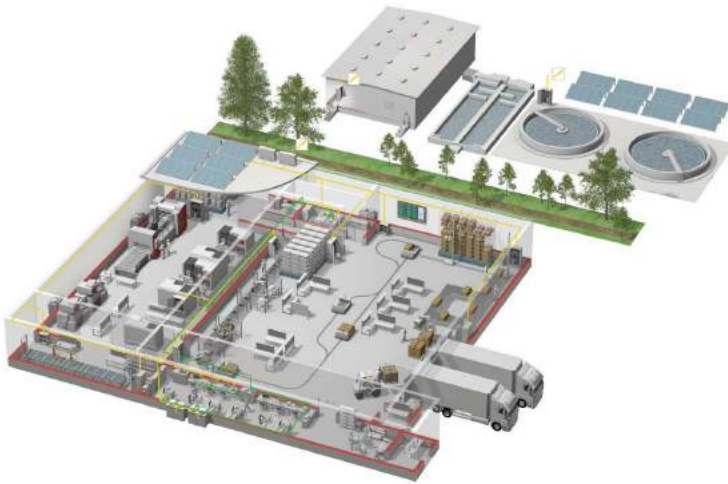
This publication explains the typical features and functions of the products herein and does not provide restrictions or other information related to usage and module combinations. Before using the products, always read the product user manuals. Mitsubishi Electric will not be held liable for damage caused by factors found not to be the cause of Mitsubishi Electric; opportunity loss or lost profits caused by faults in Mitsubishi Electric products; damage, secondary damage, or accident compensation, whether foreseeable or not, caused by special factors; damage to products other than Mitsubishi Electric products; or any other duties.

#### For safe use

- To use the products given in this publication properly, always read the relevant manuals before beginning operation.
- The products have been manufactured as general-purpose parts for general industries, and are not designed or manufactured to be incorporated in a device or system used in purposes related to human life.
- Before using the products for special purposes such as nuclear power, electric power, aerospace, medicine or passenger-carrying vehicles, consult with Mitsubishi Electric.
- The products have been manufactured under strict quality control. However, when installing the products where major accidents or losses could occur if the products fail, install appropriate backup or fail-safe functions in the system.



# YOUR SOLUTION PARTNER



Mitsubishi Electric offers a wide range of automation equipment from PLCs and HMIs to CNC and EDM machines.

## A NAME TO TRUST

Since its beginnings in 1870, some 45 companies use the Mitsubishi name, covering a spectrum of finance, commerce and industry.

The Mitsubishi brand name is recognized around the world as a symbol of premium quality.

Mitsubishi Electric Corporation, established in 1921, is active in space development, transportation, semi-conductors, energy systems, communications and information processing, audio visual equipment and home electronics, building and energy management and automation systems, and has 183 factories, laboratories and offices worldwide in over 140 countries.

This is why you can rely on Mitsubishi Electric automation solution - because we know first hand about the need for reliable, efficient, easy-to-use automation and control in our own factories.

As one of the world's leading companies with a global turnover of over 4 trillion Yen (over \$40 billion), employing over 146,000 people, Mitsubishi Electric has the resource and the commitment to deliver the ultimate in service and support as well as the best products.



Low voltage: MCCB, MCB, ACB



Medium voltage: VCB, VCC



Power monitoring, energy management



Compact and Modular Controllers



Inverters, Servos and Motors



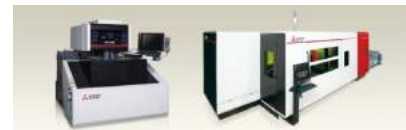
Visualization: HMIs



Numerical Control (NC)



Industrial / Collaborative Robots



Processing machines: EDM, Lasers, IDS



Transformers, Air conditioning, Photovoltaic systems

\* Not all products are available in all countries.

# Global Partner. Local Friend.



The release date varies depending on the product and your region. For details, please contact your local sales office.

## MITSUBISHI ELECTRIC CORPORATION

HEAD OFFICE: TOKYO BLDG., 2-7-3, MARUNOUCHI, CHIYODA-KU, TOKYO 100-8310, JAPAN  
NAGOYA WORKS: 1-14, YADA-MINAMI 5, HIGASHI-KU, NAGOYA, JAPAN

Country/Region Sales office  
USA .....+1-847-478-2100  
Mexico .....+52-55-3067-7512  
Brazil .....+55-11-4689-3000  
China .....+86-21-2322-3030  
Taiwan .....+886-2-2299-2499  
Korea .....+82-2-3660-9569

Singapore .....+65-6473-2308  
Malaysia .....+60-3-7958-3544  
Indonesia .....+62-21-3192-6461  
Vietnam .....+84-28-3910-5945  
Thailand .....+66-2092-8600  
Philippines .....+63-(0)2-8256-8042

India .....+91-20-2710-2000  
Australia .....+61-2-9684-7777  
Germany .....+49-2102-486-0  
UK .....+44-1707-28-8780  
Italy .....+39-039-60531  
Spain .....+34-935-65-3131

France .....+33-1-55-68-55-68  
Czech Republic...+420-255-719-200  
Turkey .....+90-216-969-2500  
Poland .....+48-12-347-65-00  
Russia .....+7-812-449-51-34  
South Africa .....+27-11-658-8100