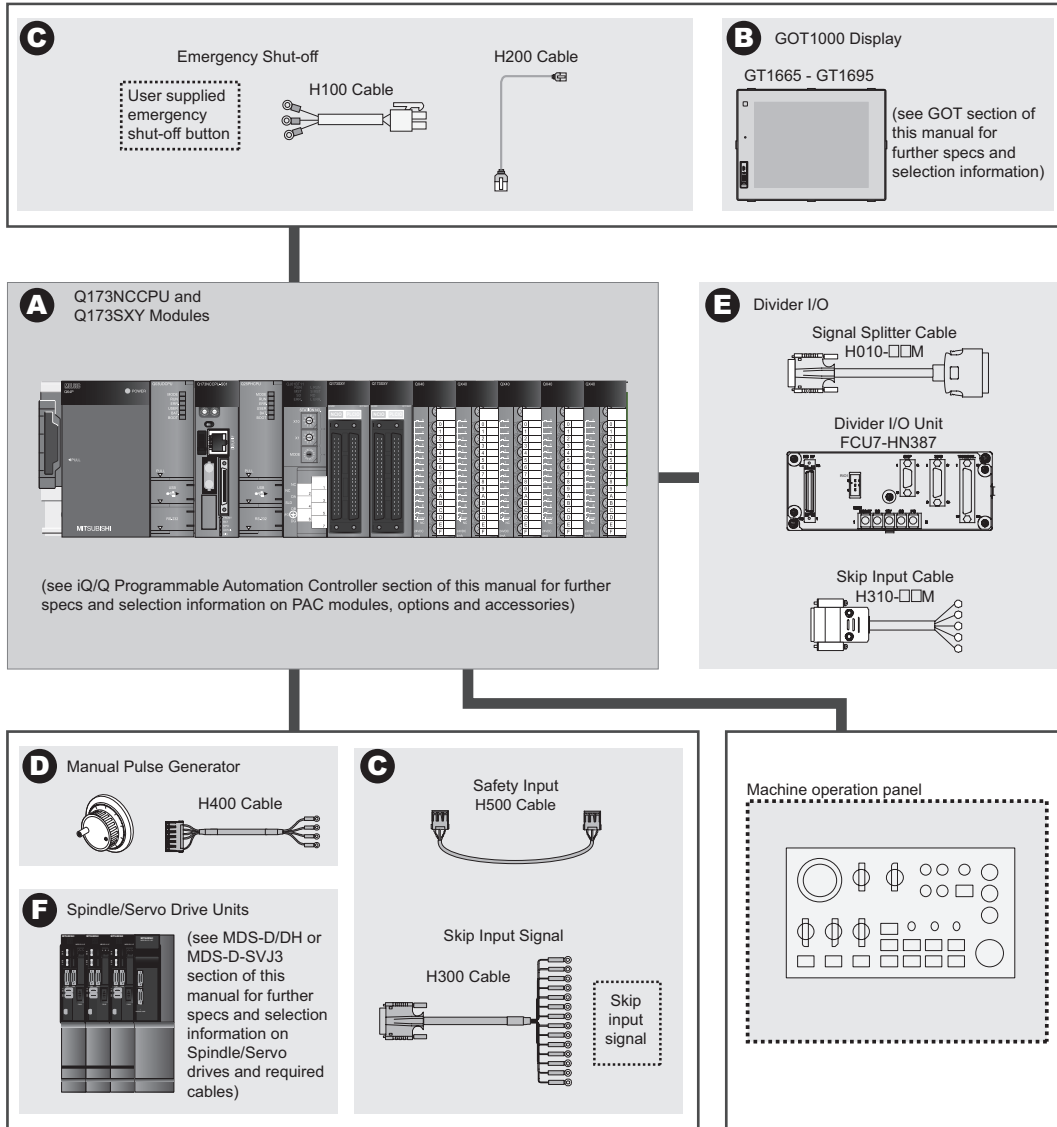


C70 Computerized Numerical Controller

C70 Series is a rack based CNC solution designed to offer a maximum TCO reduction effect to large scale machining line customers. The C70 Series features reliability with reduced tact times, and advancement in technology with the use of the iQ Series platform. This dedicated control comes in a machining Center and Lathe configuration with the ability to control up to 16 axes for maximum efficiency in production lines.

General System Diagram for C70 Configuration



CNC Selection and Associated Cables (All Models Required for System)

Base Units

Description	Notes
Base Rack	See Q Series Controller section for detailed information and specifications

CNC CPU

Description	Model Number	Stocked Item	Notes
C70 NC Unit	Q173NCCPU-S01	S	Includes Q170DBATC battery and required cable

Safety Modules

Description	Model Number	Stocked Item	Notes
IO Redundant Monitoring Unit	Q173SXY	S	Safety input cable required

Processors

Description	Notes
Processors	See Q Series Controller section for detailed information and specifications

Special Function Modules

Description	Notes
Q-iQ Modules	See Q Series Controller section for detailed information and specifications

Power Supply Modules

Description	Notes
Power Supplies	See Q Series Controller section for detailed information and specifications

GOT

Description	Model Number	Notes
8.4" to 15" SVGA or Higher	GT1665 or GT2000	See GOT section for detailed information and specifications

Control System Cable Selections

Emergency Stop Cables

Description	Model Number	Stocked Item	Cable Length
Emergency Stop Input Cable	H100-2.0M	S	2.0M
Emergency Stop Input Cable	H100-5.0M	S	5.0M
Emergency Stop Input Cable	H100-10.0M	S	10.0M
Emergency Stop Input Cable	H100-20.0M	S	20.0M

Note: Max 20 Meters

Display Ethernet Cable

Description	Model Number	Stocked Item	Notes
Display Interface Cable 2.0M	H200-2.0M	S	Connects to GT16 module
Display Interface Cable 5.0M	H200-5.0M	S	
Display Interface Cable 10.0M	H200-10.0M	S	

Skip Input Cable

Description	Model Number	Stocked item	Cable Length
Skip Input Cable For CNC CPU	H300-2.0M	S	2.0M
Skip Input Cable For CNC CPU	H300-5.0M	S	5.0M
Skip Input Cable For CNC CPU	H300-10.0M	S	10.0M

Note: Max 20 Meters

Safety Input Cable

Description	Model Number	Stocked Item	Cable Length
Safety Signal Unit Cable	H500-0.5M	S	0.5M

Manual Pulse Generator

Description	Model Number	Stocked Item	Notes
Manual Pulse Generator 12V Supply Type	HD60C	S	Need signal splitter

Manual Pulse Generator Cable

Description	Model Number	Stocked Item	Notes
MPG Cable (CNC CPU) 5V Supply Type 2.0M	H400-2.0M	S	Use 5 VDC MPG
MPG Cable (CNC CPU) 5V Supply Type 5.0M	H400-5.0M	S	Use 5 VDC MPG
MPG Cable (CNC CPU) 5V Supply Type 10.0M	H400-10.0M	S	Use 5 VDC MPG
MPG Cable (CNC CPU) 12V Supply Type 10.0M	F020-5.0M	S	Use with HD60C
MPG Cable (CNC CPU) 12V Supply Type 10.0M	F020-10.0M	S	Use with HD60C

Note: Max 20 Meters

Divider I/O

Description	Model Number	Stocked Item	Notes
Signal Splitter	FCU7-HN387	S	Need one H010-__M Cable and one H310-__M cable for skip
Signal Splitter Cable	H010-0.5M	S	0.5M
Signal Splitter Cable	H010-2.0M	S	2.0M
Signal Splitter Cable	H010-5.0M	S	5.0M
Skip Input for FCU7-HN387-2.0M	H310-2.0M	S	2.0M
Skip Input for FCU7-HN387-5.0M	H310-5.0M	S	5.0M
Skip Input for FCU7-HN387-10.0M	H310-10.0M	S	10.0M
Skip Input for FCU7-HN387-15.0M	H310-15.0M	S	15.0M

Drive System

Description	Drive Series	Notes
Full Sizes Drives	MDS-D or MDS-D2	See MDS-D/DH section for detailed information and specifications
JR Series Drives	MDS-D-SVJ3 or MDS-DJ	See MDS-D-SVJ3/SPJ3 section for detailed information and specifications
Multi-Hybrid	MDS-DM or MDS-DM2	See MDS-DM for detailed information and specifications