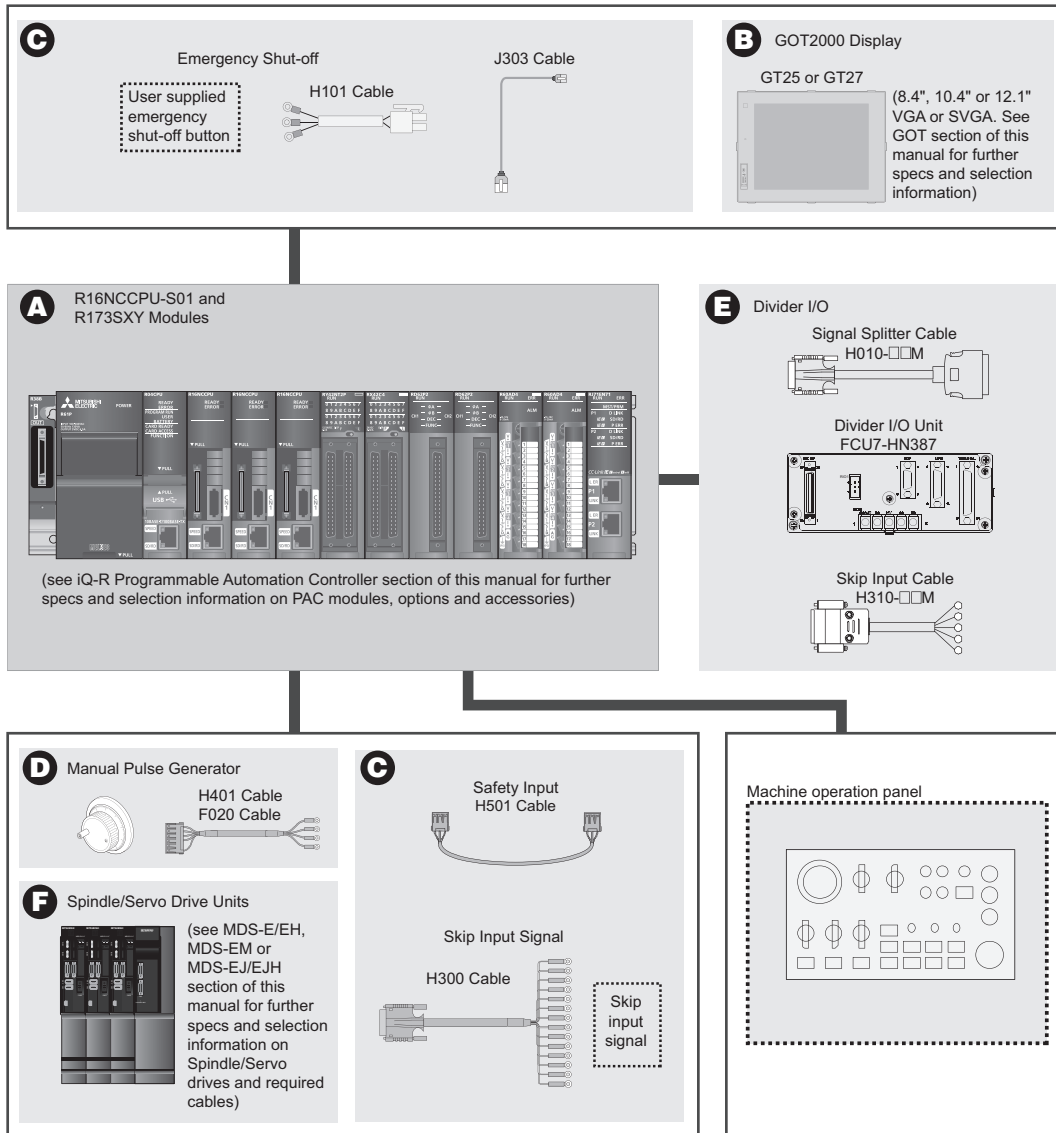


C80 Computerized Numerical Controller

C80 Series is a rack based CNC solution designed to offer a maximum TCO reduction effect to large scale machining line customers. The C80 Series features reliability with reduced tact times, and advancement in technology with the use of the iQ-R Series platform. This dedicated control comes in a machining Center and Lathe configuration with the ability to control up to 16 axes for maximum efficiency in production lines.

General System Diagram for C80 Configuration



CNC Selection and Associated Cables (All Models Required for System)

Base Units

Description	Notes
Base Rack	See iQ-R Series Controller section for detailed information and specifications

CNC CPU

Description	Model Number	Stocked Item	Notes
C80 NC Unit	R16NCCPU-S01	S	No battery required

Safety Modules

Description	Model Number	Stocked Item	Notes
IO Redundant Monitoring Unit	R173SXY	S	Safety input cable H501 required

Processors

Description	Notes
Processors	See iQ-R Series Controller section for detailed information and specifications

Special Function Modules

Description	Notes
iQ-R Modules	See iQ-R Series Controller section for detailed information and specifications

Power Supply Modules

Description	Notes
Power Supply Modules	See iQ-R Series Controller section for detailed information and specifications

GOT

Description	Model Number	Notes
8.4" to 12.1" VGA or SVGA	GT25 or GT27	See GOT section for detailed information and specifications

Control System Cable Selections

Emergency Stop Cables

Description	Model Number	Stocked Item	Cable Length
Emergency Stop Input Cable	H101-0.5M	-	0.5M
	H101-1M	-	1M
	H101-2M	S	2M
	H101-3M	-	3M
	H101-5M	S	5M
	H101-7M	-	7M
	H101-10M	S	10M
	H101-15M	-	15M
	H101-20M	-	20M

Note: Max 20 Meters

Display Ethernet Cable

Description	Model Number	Stocked Item	Cable Length
Display Interface Cable (Connects to GT2000 Module)	J303-1M	-	1M
	J303-2M	S	2M
	J303-3M	-	3M
	J303-5M	S	5M
	J303-7M	-	7M
	J303-10.0M	-	10M
	J303-15M	-	15M
	J303-20M	-	20M
	J303-30M	-	30M

Skip Input Cable

Description	Model Number	Stocked item	Cable Length
Skip Input Cable For CNC CPU	H300-1.0M	-	1M
	H300-2.0M	S	2M
	H300-3.0M	-	3M
	H300-5.0M	S	5M
	H300-10.0M	-	10M
	H300-20.0M	-	20M

Note: Max 20 Meters

Safety Input Cable

Description	Model Number	Stocked Item	Cable Length
Safety Signal Unit Cable	H501-0.1M	-	0.1M
	H501-0.2M	-	0.2M
	H501-0.3M	S	0.3M
	H501-0.5M	S	0.5M

Manual Pulse Generator

Description	Model Number	Stocked Item	Notes
Manual Pulse Generator 12V Supply Type	HD60C	S	Need signal splitter
Manual Pulse Generator 5V Supply Type	MR-HDP01	S	

Manual Pulse Generator Cable

Description	Model Number	Stocked Item	Notes
MPG Cable (CNC CPU) 5V Supply Type	H401-0.5M	-	Use 5 VDC MPG
	H401-1M	-	
	H401-2M	S	
	H401-3M	-	
	H401-5M	S	
	H401-7M	-	
	H401-10M	S	
	H401-15M	-	
MPG Cable (CNC CPU) 12V Supply Type	F020-0.5M	-	Use with HD60C
	F020-5.0M	S	
	F020-10.0M	-	
	FCU6-F020-1.0M	-	
	FCU6-F020-2.0M	-	
	FCU6-F020-3.0M	-	
	FCU6-F020-20.0M	-	
FCU6-F020-25.0M	-		

Divider I/O

Description	Model Number	Stocked Item	Notes
Signal Splitter	FCU7-HN387	S	Need one H010-__M Cable and one H310-__M cable for skip
Signal Splitter Cable	H010-0.5M	S	0.5M
	H010-1.0M	-	1M
	H010-2.0M	-	2M
	H010-3.0M	-	3M
	H010-5.0M	-	5M
Skip Input for FCU7-HN387	H310-1.0M	-	1M
	H310-2.0M	S	2M
	H310-3.0M	-	3M
	H310-5.0M	-	5M
	H310-10.0M	-	10M
	H310-15.0M	-	15M

Drive System

Description	Drive Series	Notes
Full Sizes Drives	MDS-E/EH	See MDS-E/EH section for detailed information and specifications
JR Series Drives	MDS-EJ/EJH	See MDS-EJ/EJH section for detailed information and specifications
Multi-Hybrid	MDS-EM	See MDS-EM for detailed information and specifications