



# Cables

## Cables

Item	Motor Model Number	Cable Number (_ = cable length 2, 5, 10, 15, 20, 25, 30 meter)	Stocked Lengths (m)	Protection Level	Description	
Power Cables for TM-RFM Series Direct Drive Motors	Standard-Flex, Unshielded Type Cables (Straight Type Connector Only)	TM-RFM002C20	MR7S-_M	2, 5, 10	IP65	
		TM-RFM004C20				
		TM-RFM006C20	MR7S-_M	2, 5, 10		
		TM-RFM006E20				
		TM-RFM012E20	MR-J3P1-_M	2, 5, 10, 20, 30		
		TM-RFM018E20				
		TM-RFM012G20	MR-J3P3-_M	2, 5, 10, 20, 30		
		TM-RFM048G20				
		TM-RFM072G20	MR-J3P4-_M	2, 5, 10, 20, 30		
		TM-RFM040J10				
	TM-RFM120J10	MR-J3P7-_M	2, 5, 10, 20, 30			
	TM-RFM240J10					
	High-Flex, Shielded Type Cables (Straight Type Connector Only)	TM-RFM002C20	MR7S-SH-_M	-	IP65	
		TM-RFM004C20				
		TM-RFM006C20	MR7S-SH-_M	-		
		TM-RFM006E20				
		TM-RFM012E20	MR-J3PWS1-_M	2, 5, 10, 15, 20, 30		
		TM-RFM018E20				
		TM-RFM012G20	MR-J3PWS3-_M	2, 5, 10, 15, 20, 30		
		TM-RFM048G20				
TM-RFM072G20		MR-J3PWS4-_M	2, 5, 10, 15, 20, 30			
TM-RFM040J10						
TM-RFM120J10	MR-J3PWS7-_M	2, 5, 10, 15, 20, 30				
TM-RFM240J10						

## Cables continued

			Model	Stocked Lengths (M)	IP Rating (*5)	Description
For Encoder	②	Encoder Connector Cable (For Connecting Servo Amplifier and Direct Drive Motor, or for Connecting Servo Amplifier and Absolute Position Storage Unit)	MR-J3DDCNCSBL-_M (_ = cable length 2, 5, 10, 20, 25, 30)	2, 5, 10, 20	IP67	
	③	Encoder Connector Cable (For Connecting Absolute Position Storage Unit and Direct Drive Motor)	MR-J3DDSPSCBL-_M (_ = cable length 03, 05, 1, 3)	03, 05, 1, 3	IP67	
For Controller, CN1A, CN1B	④	SSCNET III Cable (*1) (Standard Cord for Inside Panel)	MR-J3BUS_M (_ = cable length: 015, 03, 05, 1, 3m)	015, 03, 05, 1, 3	-	
	⑤	SSCNET III Cable (*1) (Standard Cable for Outside Panel)	MR-J3BUS_M-A (_ = cable length: 5, 10, 20m)	5, 10, 20	-	
	⑥	SSCNET III Cable (*1) (Long Distance Cable, Long Bending Life)	MR-J3BUS_M-B (_ = cable length: 30, 40, 50m) (*2)	30	-	
For CN3	⑦	CN20 or CN3 Pigtail Cable (20 Pin)	MR-CCN1CBL-_M (_ = cable length 3, 5m) (*3)	3, 5	-	
For CN3	⑧	Input/Output Signal Connector Set	MR-J2CN1 (*4)	S	-	
For CN5	●	Personal Computer Communication Cable - USB	MR-J3USBCBL3M Cable length: 3m	S	-	
For CN1B	⑩	Connector Cap for SSCNET III	(Standard accessory)	-	-	
For Motor Power Supply	⑪	Power Supply Connector Set for TM-RFM_C20, TM-RFM_E20	MR-PWCNF (straight type)	S	IP67	
		Power Supply Connector set for TM-RFM_G20	MR-PWCNS4 (straight type)	S	IP67	
		Power Supply Connector Set for TM-RFM040J10, TM-RFM120J10	MR-PWCNS5 (straight type)	S	IP67	
		Power Supply Connector Set for TM-RFM240J10	MR-PWCNS3 (straight type)	S	IP67	
Power Connectors (Comes with J3 Amplifier standard)	⑫	CNP1 Connector 1kW or Less (200VAC)	54928-0670	S	-	
		CNP1 Connector 2kW - 3.5kW (200VAC) (*6)	PC4/6-STF-7.62	S	-	
	⑬	CNP2 Connector up to 3.5kW (200VAC) (*6)	54927-0510	S	-	
	⑭	CNP3 Connector 1kW or Less (200VAC)	54928-0370	S	-	
		CNP3 Connector 2kW - 3.5kW (200VAC) (*6)	PC4/3-STF-7.62	S	-	
	⑮	CNP1-2-3 Insertion Tool (200VAC)	54932-0000	S	-	
For CN3	⑯	20 Pin Terminal Block For J3-B (TB20 Cannot be Used)	PS7DW-20V14B-F	S	-	
	⑰	Cable for PS7DW-20V14B-F Terminal Block	MR-J2HBUS_M (_ = Cable length 0.5, 1, 3, 5m)	05, 1, 3, 5	-	
For Encoder	⑱	Encoder Connector Set (For Connecting Servo Amplifier and Direct Drive Motor, or for Connecting Servo Amplifier and Absolute Position Storage Unit)	MR-J3DDCNS	S	IP67	
	①	Encoder Connector Set (For Connecting Absolute Position Storage Unit and Direct Drive Motor)	MR-J3DDSPS	S	IP67	

## Notes:

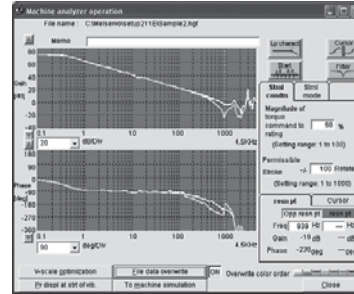
1. Look carefully through the precautions enclosed with the options before use.
2. Contact your local sales office for the cables with ultra-long bending life and/or for unlisted lengths.
3. Special tools are required. Contact your local sales office for details.
4. The connector and shell kit are soldered type. Models for press bonding type are 10120-6000EL (connector) and 10320-3210-000 (shell kit).
5. The IP rating indicated is for the connector's protection against ingress of dust and water when coupled to a servo amplifier/direct drive motor. If the IP rating of the servo amplifier/direct drive motor differs from that of these connectors, overall IP rating depends on the lowest of all.
6. Use this model for amplifiers manufactured prior to January 2008.

## Software and Manuals

### MR-CONFIGURATOR2 • (MRZJW3-MOTSZ111E)

This software makes it easy to perform setup, tuning, monitor display, diagnostics, reading and writing of parameters, and test operations with a personal computer. User-friendly functions that enable the balance with the machine system, optimum control and short start up time are available.

- This software can set up and tune your servo system easily with a personal computer.
- Multiple monitor functions. Graphic display functions are provided to display the servomotor status with the input signal triggers, such as the command pulse, droop pulse and speed.
- Test operations with a personal computer. Test operation of the servomotors can be performed with a personal computer using multiple test mode menus.
- Further advanced tuning is possible with the improved advanced functions.




### Manuals

Hardware Description	Model Number	Stocked Item
MR-J3-B-RJ080W	-	MEAU.com

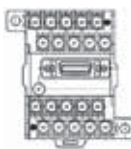
Description	Model Number	Stocked Item
Windows Communication Software	MR-CONFIGURATOR2	S
Communication Cable	MR-J3USBCBL3M	S

## System Options

### RS-422 Distributor (For Multidrop)


Servo Amplifier Type	Model Number	Stocked Item	Description
MR-J3-B	BMJ-8	S	

### 20 Pin Terminal Block (\*1)

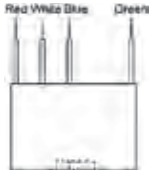
Servo Amplifier Type	Model Number	Stocked Item	Description
MR-J3-B	PS7DW-20V14B-F	S	

Note: MR-TB20 terminal block cannot be used for MR-J3-B.


### Line Noise Filter

Servo Amplifier Type	Model Number	Stocked Item	Description
MR-J3-200B or Smaller	FR-BSF01	S	
MR-J3-350B or Larger	FR-BLF	S	

### Radio Noise Filter


Servo Amplifier Type	Model Number	Stocked Item	Description
All 200VAC J3 Models	FR-BIF	S	

### EMC Filter

Servo Amplifier Type	Model Number (*)	Stocked Item	Description
MR-J3-100B and less	MF3F480-010.233MF	-	
MR-J3-200B ~ 350B	MF3F480-015.230MF3	-	

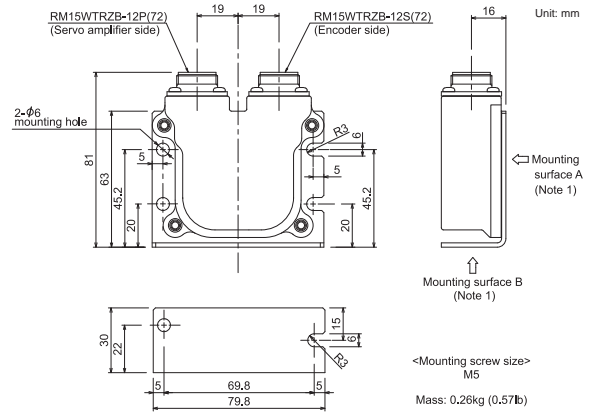
\*Note: Contact MEAU for additional filter opportunities.

## Battery

Model Number	Description	Stocked Item	Description
MR-J3BAT	The servomotor's absolute value can be maintained by installing the battery in the servo amplifier. The battery is not required when the servo system is used in an incremental mode.	S	

## Absolute Position Storage Unit

Model Number	Description	
MR-BTAS01	<b>Ambient Temperature</b>	0 to 55°C (32 to 131°F) Non-freezing), Storage: -20 to 65°C (-4 to 149°F) non-freezing)
	<b>Ambient Humidity</b>	90% RH max. non-condensing) Storage: 90% RH max. (non-condensing)
	<b>Atmosphere</b>	Indoors (no direct sunlight): no corrosive gas, inflammable gas, oil mist, dust or splash of oil/water)
	<b>Elevation</b>	1000m or less above sea level
	<b>Vibration</b>	When mounted on the surface AL 49m/s <sup>2</sup> or less (direction of X, Y and Z axes) When mounted on surface B: 5.9m/s <sup>2</sup> or less (directions of X, Y and Z axes)



## Optional Regeneration Resistors

Servo Amplifier	Built-in Regenerative Resistor>(*1)	Tolerable Regenerative Power (W) (*3)						
		Optional Regeneration Unit (*1)						
Stocked Item		MR-RB032 (40Ω)	MR-RB12 (40Ω)	MR-RB30 (13Ω)	MR-RB31 (6.7Ω)	MR-RB32 (40Ω)	MR-RB50 (13Ω)(*2)	MR-RB51 (6Ω)(*2)
MR-J3-20B-RJ080W	10	30	100	-	-	-	-	-
MR-J3-40B-RJ080W	10	30	100	-	-	-	-	-
MR-J3-60B-RJ080W	10	30	100	-	-	-	-	-
MR-J3-70B-RJ080W	20	30	100	-	-	300	-	-
MR-J3-100B-RJ080W	20	30	100	-	-	300	-	-
MR-J3-350B-RJ080W	100	-	-	300	-	-	500	-
MR-J3-500B-RJ080W	130	-	-	-	300	-	-	500

### Notes:

- For external dimensions and connections of the built-in regenerative resistor and optional regeneration unit, refer to MELSERVO-J3 catalog.
- Be sure to install a cooling fan. The cooling fan must be supplied by user.
- The power values in this table are resistor-regenerated powers, not rated powers.